

LOC I-ANB 111.5	APP CRS 052°	Rwy Ldg TDZE Apt Elev	7002 595 612
---------------------------	------------------------	-----------------------------	---

ILS Y or LOC Y RWY 5

ANNISTON RGNL (ANB)

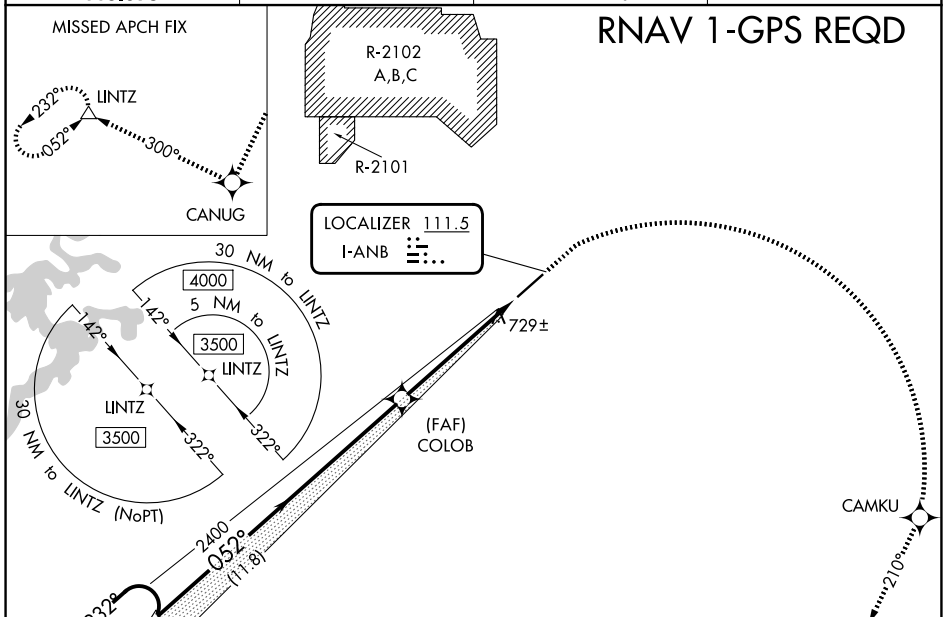
⚠ Circling NA north of Rwy 5-23. RNAV 1-GPS required. For inop ALS, increase S-ILS 5 all Cats visibility to 1 SM. When local altimeter setting not received, use Gadsden altimeter setting: increase DA to 975 and all visibilities ¼ SM; increase all MDAs 80 feet, and S-LOC 5 Cat C/D, and Circling Cat C visibilities ½ SM. For inop ALS when using Gadsden altimeter setting: increase S-ILS 5 all Cats to 1 ¼ SM.

MALSR



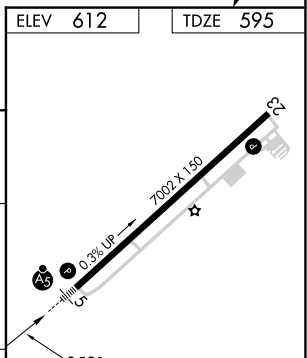
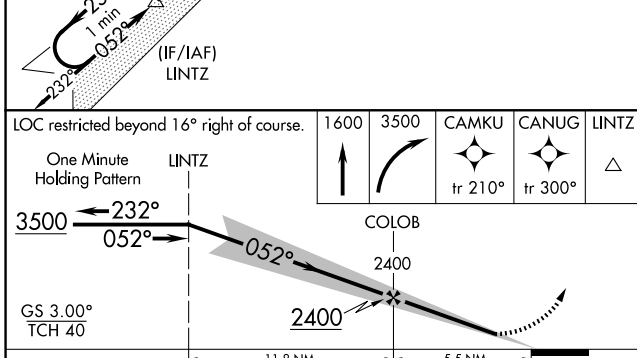
MISSED APPROACH: Climb to 1600 then climbing right turn to 3500 direct CAMKU then on track 300° to CANUG and on track 300° to LINTZ and hold.

AWOS-3 119.675	BIRMINGHAM APP CON 132.15 285.45	CTAF 123.6	UNICOM 123.0
--------------------------	--	----------------------	------------------------



SE-4, 16 APR 2026 to 14 MAY 2026

SE-4, 16 APR 2026 to 14 MAY 2026



LOC restricted beyond 16° right of course.	1600	3500	CAMKU	CANUG	LINTZ
One Minute Holding Pattern	LINTZ				
3500 ← 232°	← 052° →				
GS 3.00°					
TCH 40					
		2400			
		2400			
		11.8 NM	5.5 NM		
CATEGORY	A	B	C	D	
S-ILS 5	909-½		314 (300-½)		
S-LOC 5	1120-½ 525 (600-½)		1120-1 525 (600-1)		
CIRCLING	1420-1 808 (900-1)		1420-2¼ 808 (900-2¼)		1820-3 1208 (1300-3)

ELEV 612	TDZE 595				
FAF to MAP 5.5 NM					
Knots	60	90	120	150	180
Min:Sec	5:30	3:40	2:45	2:12	1:50