

LOC I-ANB <b>111.5</b>	APP CRS <b>052°</b>	Rwy Ldg TDZE Apt Elev	<b>7002</b> <b>595</b> <b>612</b>
---------------------------	------------------------	-----------------------------	---

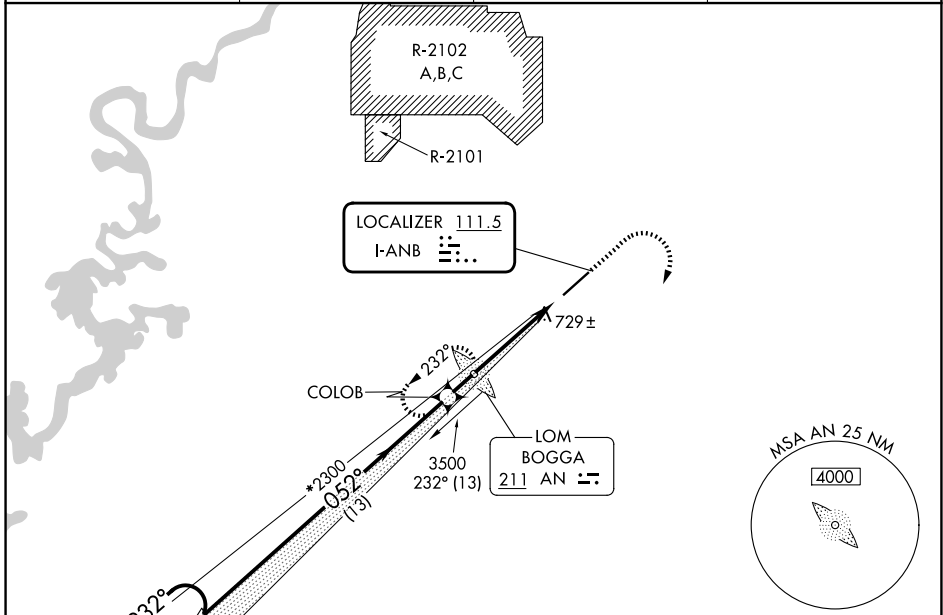
# ILS Z or LOC Z RWY 5

ANNISTON RGNL (ANB)

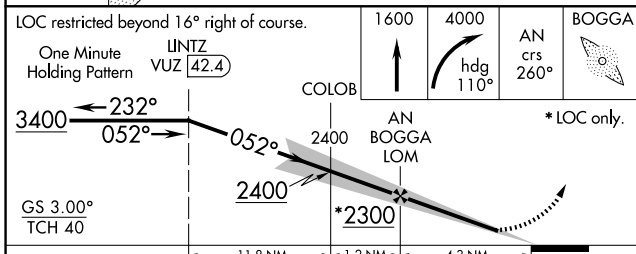
**⚠** Circling NA north of Rwy 5-23. ADF required. When local altimeter setting not received, use Gadsden altimeter setting: increase DA to 975 and all visibilities ¼ SM; all MDAs 80 feet, and all Cat C visibilities ½ SM. For inop ALS increase S-ILS 5 all Cats visibility to 1 SM. For inop ALS when using Gadsden altimeter setting, increase S-ILS 5 all Cats visibility to 1¼ SM.

**MALSRL**  
MISSED APPROACH: Climb to 1600 then climbing right turn to 4000 on heading 110° then on BOGGA LOM 260° course to BOGGA LOM and hold.

AWOS-3 <b>119.675</b>	BIRMINGHAM APP CON <b>132.15 285.45</b>	CTAF <b>123.6</b>	UNICOM <b>123.0</b>
--------------------------	--	----------------------	------------------------



**ADF REQUIRED**



ELEV 612	TDZE 595
REIL Rwy 23 HIRL Rwy 5-23	
FAF to MAP 4.3 NM	
Knots	60 90 120 150 180
Min:Sec	4:18 2:52 2:09 1:43 1:26

CATEGORY	A	B	C	D
S-ILS 5	909-½ 314 (300-½)			
S-LOC 5	1120-½	525 (600-½)	1120-1 525 (600-1)	NA
CIRCLING	1420-1	808 (900-1)	1420-2¼ 808 (900-2¼)	1820-3 1208 (1300-3)

SE-4, 16 APR 2026 to 14 MAY 2026

SE-4, 16 APR 2026 to 14 MAY 2026