

WAAS CH 58315 W23A	APP CRS 233°	Rwy Ldg 7002 TDZE 612 Apt Elev 612
--	------------------------	---

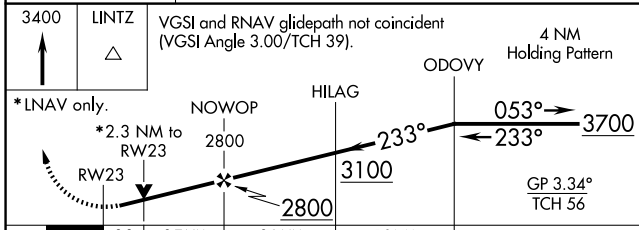
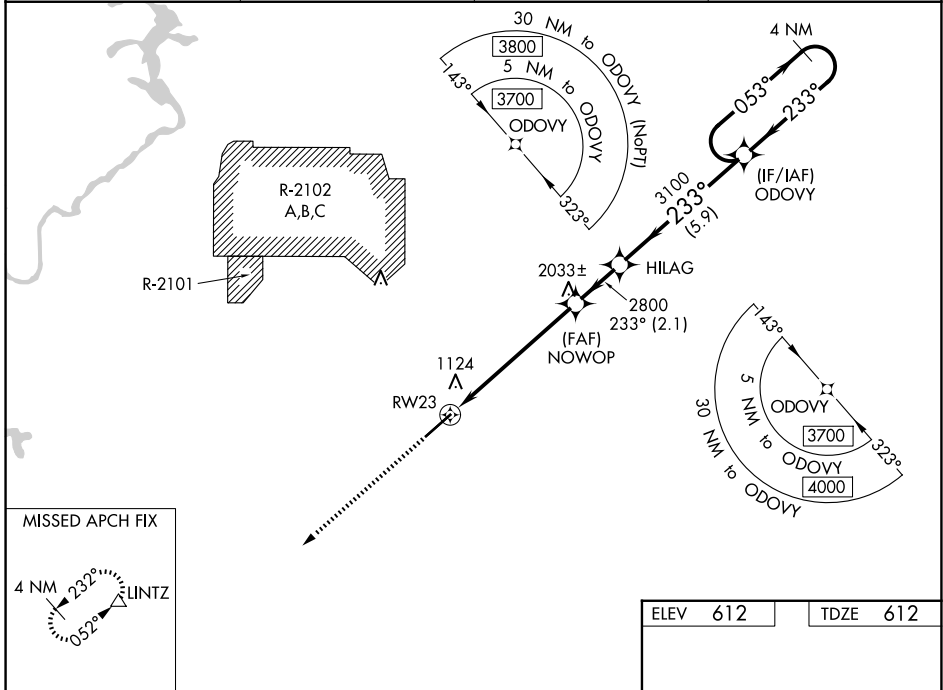
RNAV (GPS) RWY 23

ANNISTON RGNL (ANB)

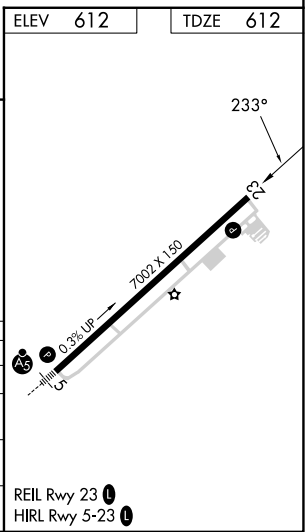
⚠ For uncompensated Baro-VNAV systems, LNAV/VNAV NA below -8°C (18°F) or above 54°C (130°F). Circling NA north of Rwy 5-23. Rwy 23 helicopter visibility reduction below ¾ NA. DME/DME RNP-0.3 NA. When local altimeter setting not received, use Gadsden altimeter setting: increase all DA 66 feet and all visibilities ½ SM; increase all MDAs 80 feet and Circling Cat A and C visibilities ¼ SM. Baro-VNAV and VDP NA when using Gadsden altimeter setting.

MISSED APPROACH:
Climb to 3400 direct LINTZ and hold.

AWOS-3 119.675	BIRMINGHAM APP CON 132.15 285.45	CTAF 123.6	UNICOM 123.0
--------------------------	--	----------------------	------------------------



CATEGORY	A	B	C	D
LPV DA	952-1	340 (400-1)		NA
LNAV/VNAV DA	1274-2	662 (700-2)		NA
LNAV MDA	1380-1 768 (800-1)	1380-1¼ 768 (800-1¼)	1380-2½	768 (800-2½)
CIRCLING	1420-1 808 (900-1)	1420-1¼ 808 (900-1¼)	1420-2½ 808 (900-2½)	1820-3 1208 (1300-3)



SE-4, 16 APR 2026 to 14 MAY 2026

SE-4, 16 APR 2026 to 14 MAY 2026