


WAAS CH <b>78106</b> <b>W05A</b>	APP CRS <b>052°</b>	Rwy Ldg <b>7002</b> TDZE <b>595</b> Apt Elev <b>612</b>
--	------------------------	---

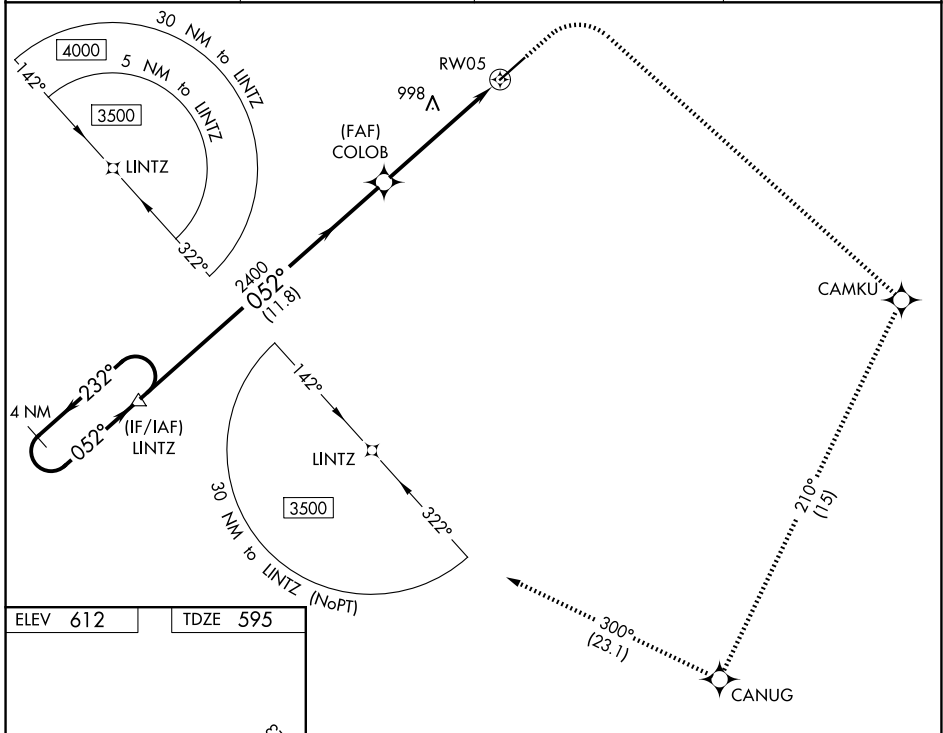
# RNAV (GPS) RWY 5

ANNISTON RGNL (ANB)

**⚠** Circling NA North of Rwy 5-23. DME/DME RNP-0.3 NA. When local altimeter setting not received, use Gadsden altimeter setting and increase all DA 66 feet and all MDA 80 feet and LPV all Cats, LNAV Cats C and D and Circling Cats A, B, and C visibility ¼ SM. For inop ALS increase LPV all Cats visibility to 1 SM. For inop ALS when using Gadsden altimeter setting, increase LPV all Cats visibility to 1 ¼ SM. VDP NA with Gadsden altimeter setting.

**MALSR**  MISSED APPROACH: Climb to 1600, then climbing right turn to 3500 direct CAMKU and track 210° to CANUG and track 300° to LINTZ and hold.

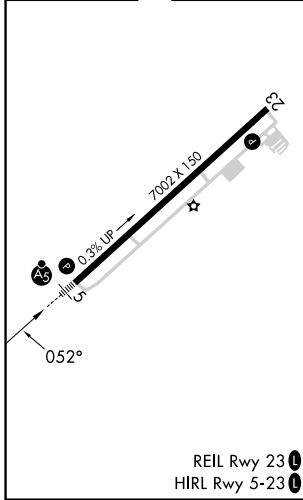
AWOS-3 <b>119.675</b>	BIRMINGHAM APP CON <b>132.15 285.45</b>	CTAF <b>123.60</b>	UNICOM <b>123.0</b>
--------------------------	--	-----------------------	------------------------



SE-4, 16 APR 2026 to 14 MAY 2026

SE-4, 16 APR 2026 to 14 MAY 2026

ELEV 612	TDZE 595
----------	----------



4 NM Holding Pattern	LINTZ	1600	3500	CAMKU	tr 210°	CANUG	tr 300°	LINTZ
3500	← 232°	052° →	052°	COLOB	2400	*1.7 NM to RWY 5	RWY 5	*LNAV only.
GP 3.00°	TCH 40		2400					
			11.8 NM	3.9 NM	1.7 NM			
CATEGORY	A	B	C	D				
LPV DA	909-5/8				314 (300-5/8)			
LNAV MDA	1160-1/2		565 (600-1/2)		1160-1/4		565 (600-1/4)	
CIRCLING	1420-1808 (900-1)		1420-2 1/4		808 (900-2 1/4)		1820-3	
							1208 (1300-3)	