

LOC/DME I-HWID 111.5 Chan 52	APP CRS 288°	Rwy Ldg TDZE Apt Elev 5018 50 52
--	------------------------	--

LOC RWY 28L

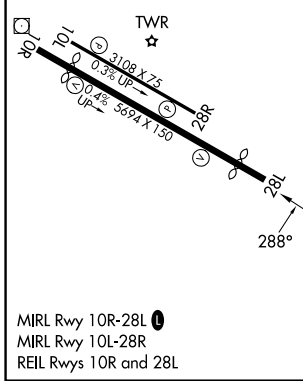
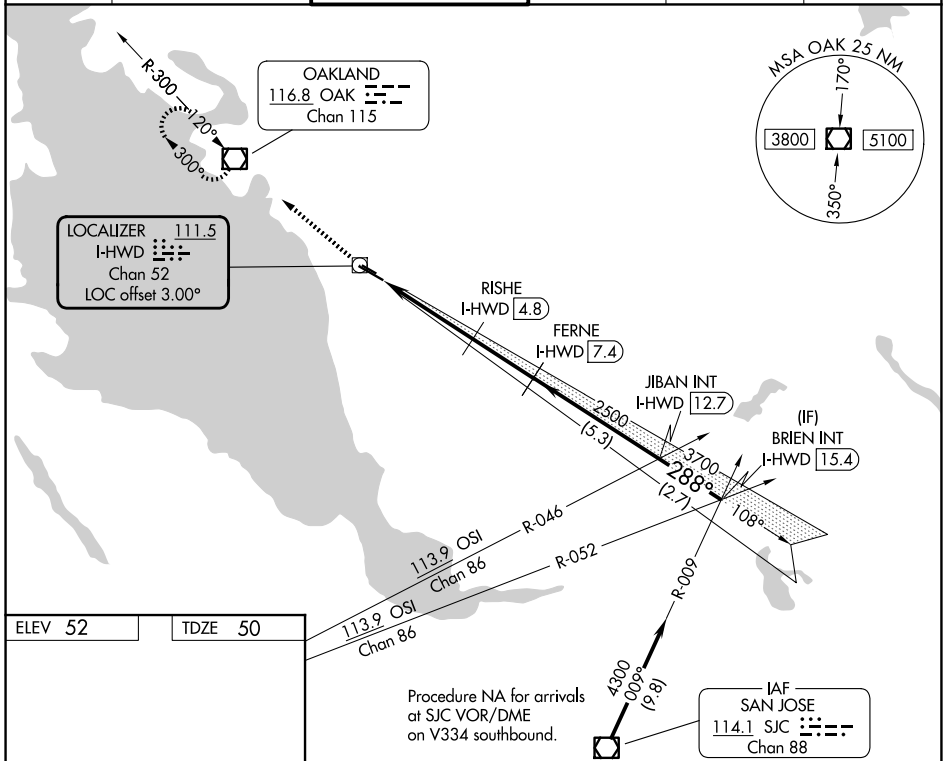
HAYWARD EXEC (HWD)

DME required.

⚠ Rwy 28L helicopter visibility reduction below ¼ SM NA. Circling Rwy 10L, 28R NA at night. Circling NA north of Rwy 10L-28R. When local altimeter setting not received, use OAK altimeter setting and increase all MDAs 40 feet and Circling visibility Cat D ¼ SM.

MISSED APPROACH: Climb to 2100 direct OAK VOR/DME and hold.

ATIS 126.7	NORCAL APP CON 124.4 351.8	HAYWARD TOWER * 120.2 (CTAF) 257.8	GND CON 121.4	CLNC DEL 128.05	UNICOM 122.95
----------------------	--------------------------------------	--	-------------------------	---------------------------	-------------------------



2100	OAK	VGSJ and descent angles not coincident (VGSJ Angle 4.00/TCH 35).		BRIEN INT I-HWD 15.4
		RISHE I-HWD 4.8	FERNE I-HWD 7.4	JIBAN INT I-HWD 12.7
		I-HWD 0.9	I-HWD 1.8	I-HWD 2.7
		1560	2500	3700
		1 NM	3 NM	2.6 NM
				5.3 NM
				2.7 NM

CATEGORY	A	B	C	D
S-28L	500-1	450 (500-1)	500-1 3/8	450 (500-1 3/8)
CIRCLING	540-1	488 (500-1)	540-1 1/2 488 (500-1 1/2)	920-2 3/4 868 (900-2 3/4)

SW-2, 16 APR 2026 to 14 MAY 2026

SW-2, 16 APR 2026 to 14 MAY 2026