

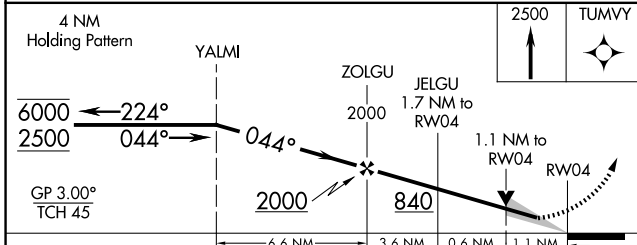
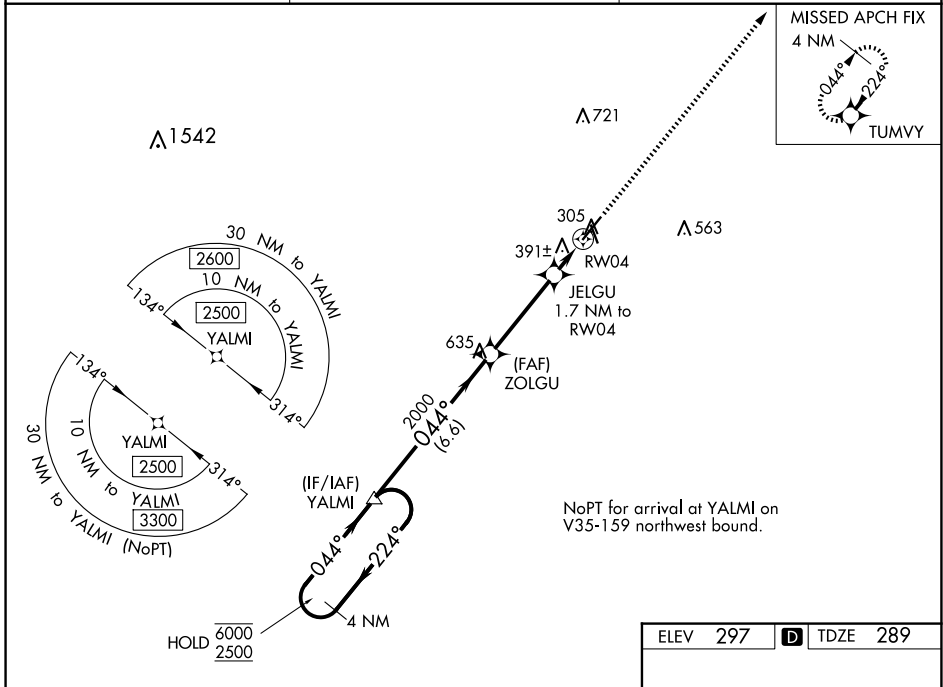
WAAS CH 82603 W04A	APP CRS 044°	Rwy Idg TDZE Apt Elev	6000 289 297
--	------------------------	-----------------------------	---

RNAV (GPS) RWY 4

MOULTRIE MUNI (MGR)

RNP APCH - GPS.		MISSED APPROACH: Climb to 2500 direct TUMVY and hold.
<p>⚠ Circling Rwy 16, 34 NA at night. For uncompensated Baro-VNAV systems, LNAV/VNAV NA below -15°C or above 54°C.</p>		

AWOS-3PT 118.925	VALDOSTA APP CON ★ 126.6 285.6	UNICOM 122.8 (CTAF) 0
----------------------------	--	---------------------------------



ELEV 297	D TDZE 289
----------	-------------------

CATEGORY	A	B	C	D
LPV DA		539-1	250 (300-1)	
LNAV/VNAV DA		552-1	263 (300-1)	
LNAV MDA		660-1	371 (400-1)	
C CIRCLING	720-1 423 (500-1)	760-1 463 (500-1)	860-1½ 563 (600-1½)	1080-2½ 783 (800-2½)

MIRL Rwy 4-22 0

SE-4, 16 APR 2026 to 14 MAY 2026

SE-4, 16 APR 2026 to 14 MAY 2026