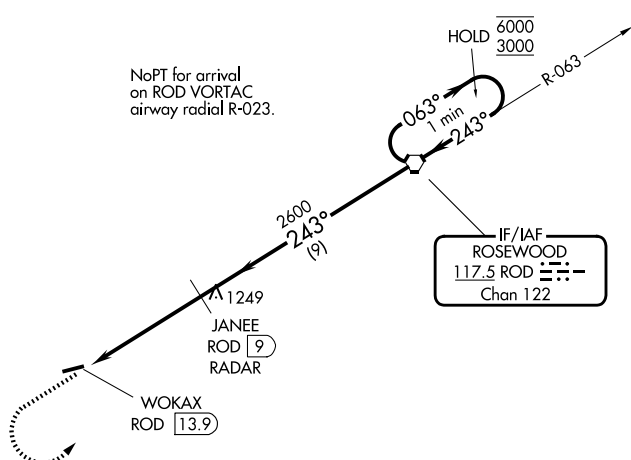


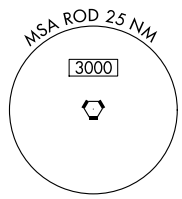
VORTAC ROD 117.5 Chan 122	APP CRS 243°	Rwy Ldg TDZE Apt Elev	3998 986 993
---	------------------------	-----------------------------	---

VOR RWY 26
PIQUA/HARTZELL FLD (I17)

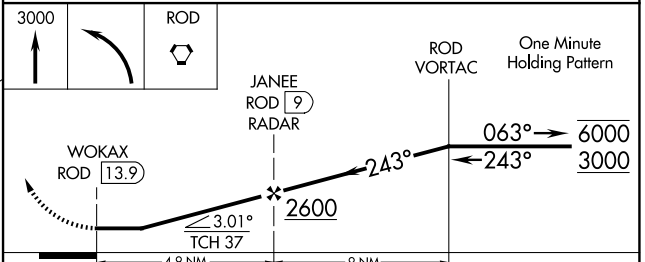
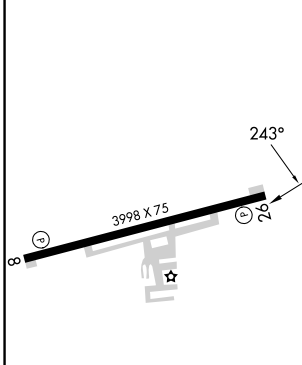
DME or RADAR required.		MISSED APPROACH: Climb to 3000 then left turn direct ROD VORTAC and hold.	
▼ Rwy 26 helicopter visibility reduction below 3/4 SM NA. ▲ NA Use James M Cox Dayton Intl altimeter setting.		DAY ASOS 125.8	VES AWOS-3PT 125.9
		COLUMBUS APP CON 134.45 294.5 352.05	UNICOM 123.0 (CTAF) 0



IF/IAF
ROSEWOOD
117.5 ROD
Chan 122



ELEV 993	TDZE 986
----------	----------



CATEGORY	A	B	C	D
S-26	1500-1	514 (600-1)	1500-1 3/8	514 (600-1 3/8)
CIRCLING	1500-1 507 (600-1)	1560-1 567 (600-1)	1560-1 1/2 567 (600-1 1/2)	1880-3 887 (900-3)

FAF to MAP 4.9 NM					
Knots	60	90	120	150	180
Min:Sec	4:54	3:16	2:27	1:58	1:38

EC-2, 16 APR 2026 to 14 MAY 2026

EC-2, 16 APR 2026 to 14 MAY 2026