

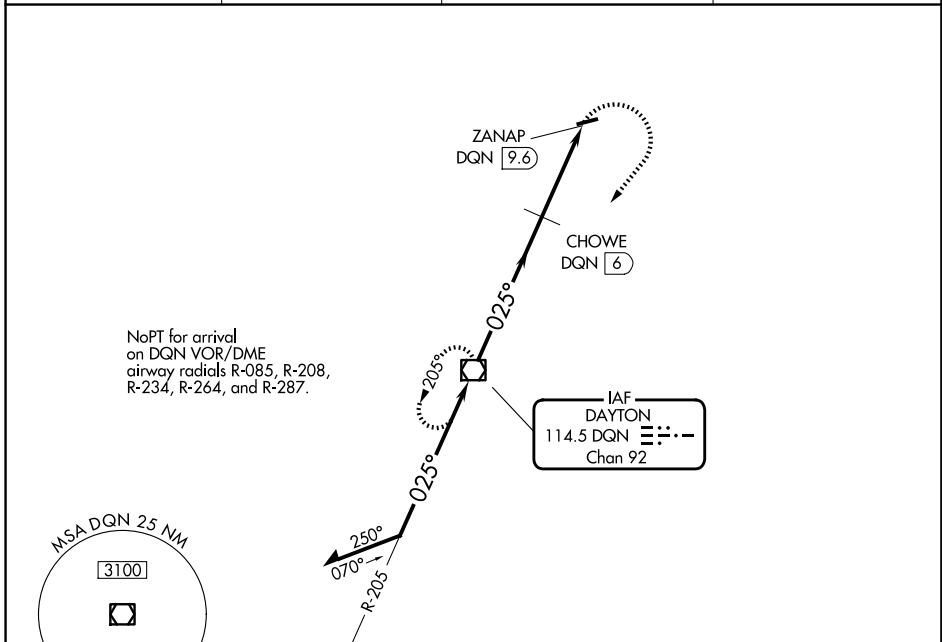
VOR/DME DGN 114.5 Chan 92	APP CRS 025°	Rwy Ldg TDZE Apt Elev N/A N/A 993
---	------------------------	---

VOR-A

PIQUA/HARTZELL FLD (I17)

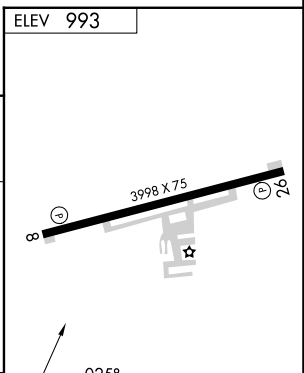
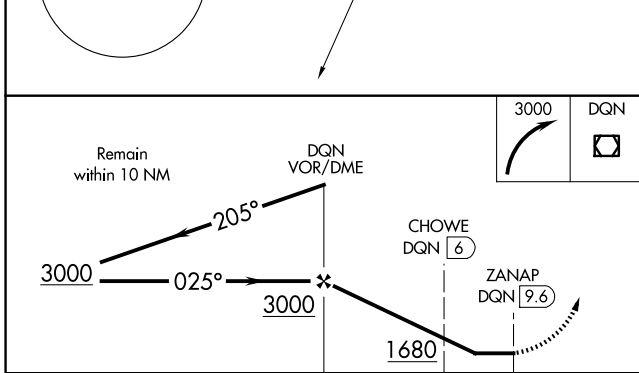
<p>▼ NA Use James M Cox Dayton Intl altimeter setting.</p>	<p>MISSED APPROACH: Climbing right turn to 3000 direct DGN VOR/DME and hold.</p>
---	--

<p>DAY ASOS 125.8</p>	<p>VES AWOS-3PT 125.9</p>	<p>COLUMBUS APP CON 134.45 294.5 352.05</p>	<p>UNICOM 123.0 (CTAF) 0</p>
----------------------------------	--------------------------------------	--	--



EC-2, 16 APR 2026 to 14 MAY 2026

EC-2, 16 APR 2026 to 14 MAY 2026



	A		B		C		D	
CIRCLING	1680-1 687 (700-1)		1680-2 687 (700-2)		1880-3 887 (900-3)			
CHOWE FIX MINIMUMS (DME REQUIRED)								
CIRCLING	1500-1 507 (600-1)	1560-1 567 (600-1)	1560-1½ 567 (600-1½)	1880-3 887 (900-3)				

FAF to MAP 9.6 NM					
Knots	60	90	120	150	180
Min:Sec	9:36	6:24	4:48	3:50	3:12