

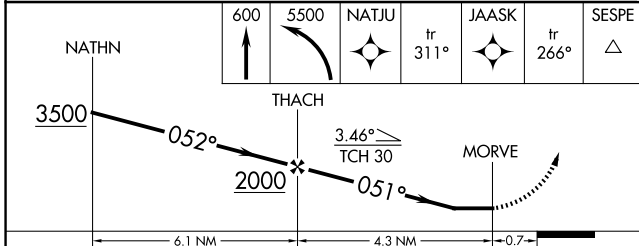
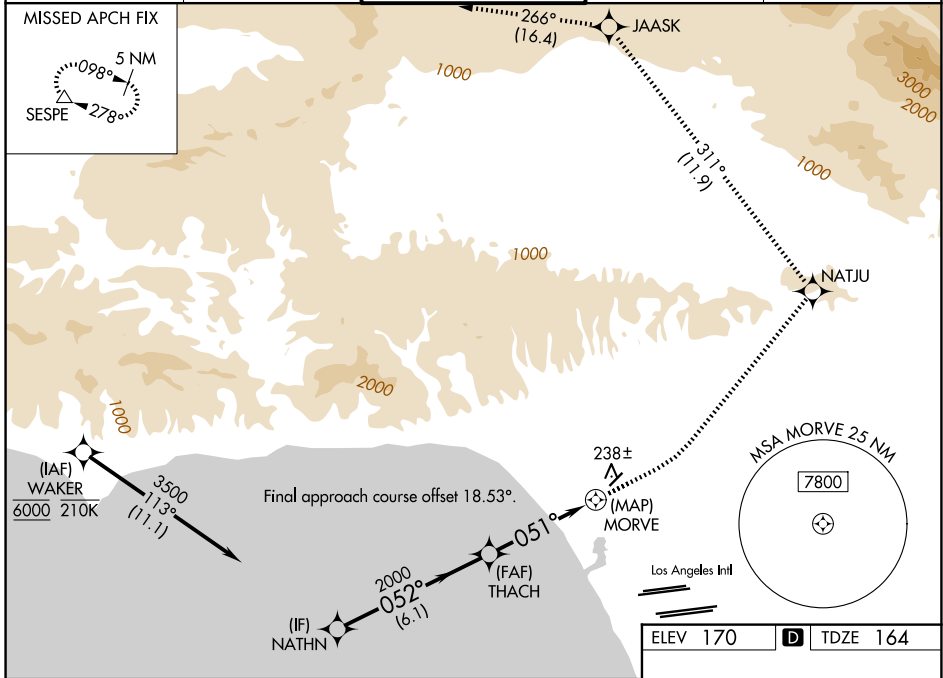
WAAS CH <b>50339</b> <b>W03A</b>	APP CRS <b>051°</b>	Rwy Ldg TDZE <b>164</b> Apt Elev <b>170</b>	<b>3500</b>
--	------------------------	---	-------------

# RNAV (GPS) Y RWY 3

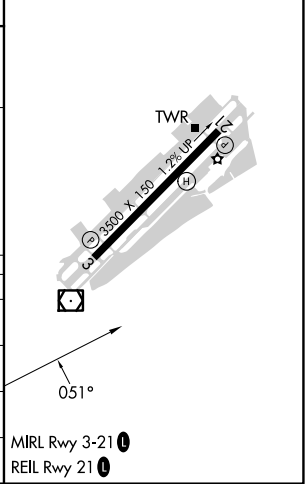
SANTA MONICA MUNI (SMO)

RNP APCH - GPS.		MISSED APPROACH: Climb to 600 then climbing left turn to 5500 direct NATJU and track 311° to JAASK and track 266° to SESPE and hold.		
Rwy 3 helicopter visibility reduction below 3/4 SM NA.		*Missed approach requires minimum climb of 280 feet per NM to 2300.		

ATIS <b>119.15</b>	SOCAL APP CON <b>135.05 317.5</b>	SANTA MONICA TOWER * <b>120.1 (CTAF) 257.8</b>	GND CON <b>121.9</b>	UNICOM <b>122.95</b>
-----------------------	--------------------------------------	---	-------------------------	-------------------------



ELEV 170	TDZE 164
----------	----------



CATEGORY	A	B	C	D
LP MDA*	480-1		316 (400-1)	
LNAV MDA*	500-1		336 (400-1)	
LP MDA	820-1	656 (700-1)		820-1 7/8 656 (700-1 7/8)
LNAV MDA	1000-1 836 (900-1)	1000-1 1/4 836 (900-1 1/4)	1000-2 1/2	836 (900-2 1/2)

MIRL Rwy 3-21   
REL Rwy 21

SW-3, 16 APR 2026 to 14 MAY 2026

SW-3, 16 APR 2026 to 14 MAY 2026