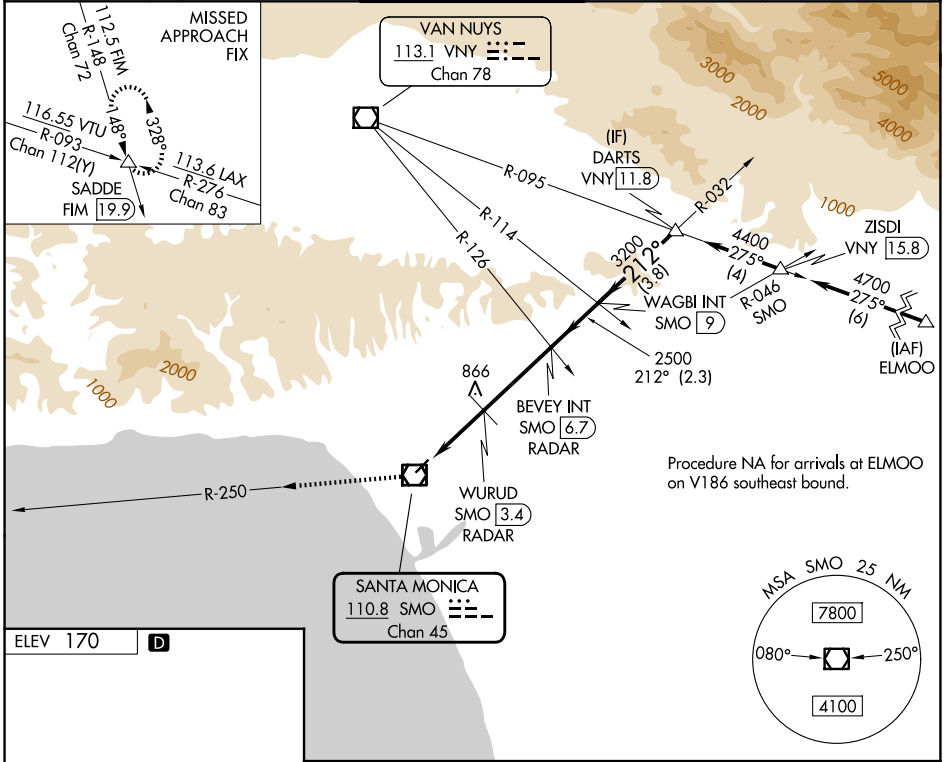


VOR/DME SMO <b>110.8</b> Chan 45	APP CRS <b>212°</b>	Rwy Ldg TDZE N/A N/A	Apt Elev <b>170</b>
--	------------------------	----------------------------	------------------------

# VOR-A

SANTA MONICA MUNI (SMO)

<p><b>NA</b> Circling NA northwest of Rwy 3-21.</p>		<p>MISSED APPROACH: Climb to 5000 on SMO VOR/DME R-250 and on FIM VORTAC R-148 to SADDE INT/19.9 DME and hold, continue climb-in-hold to 5000.</p>		
ATIS <b>119.15</b>	SOCAL APP CON <b>135.05 317.5</b>	SANTA MONICA TOWER * <b>120.1 (CTAF) 257.8</b>	GND CON <b>121.9</b>	UNICOM <b>122.95</b>



ELEV 170				
SMO R-250	FIM R-148	SADDE INT	BEVEY INT SMO [6.7] RADAR	DARTS VNY [11.8]
SMO VOR/DME	WURUD SMO [3.4] RADAR	WAGBI INT SMO [9]	3200	4400
3.4 NM	3.2 NM	2.3 NM	3.8 NM	
CATEGORY	A	B	C	D
CIRCLING	1540-1¼ 1370 (1400-1¼)	1540-1½ 1370 (1400-1½)	1540-3	1370 (1400-3)
WURUD FIX MINIMUMS				
CIRCLING	1120-1¼ 950 (1000-1¼)		1180-3	1010 (1100-3)

SW-3, 16 APR 2026 to 14 MAY 2026

SW-3, 16 APR 2026 to 14 MAY 2026