

VOR FFT <b>109.4</b>	APP CRS <b>251°</b>	Rwy Ldg TDZE Apt Elev	<b>5506</b> <b>790</b> <b>813</b>
-------------------------	------------------------	-----------------------------	---

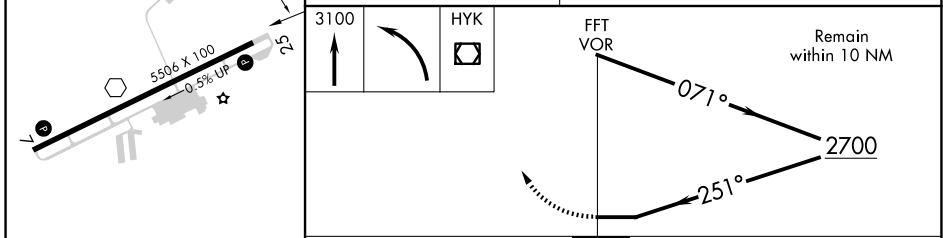
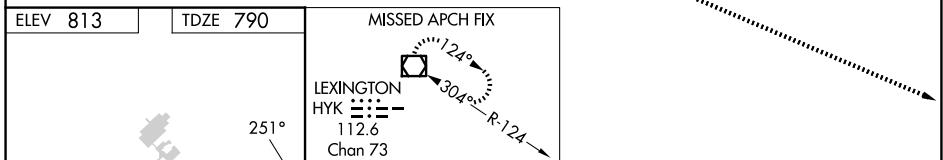
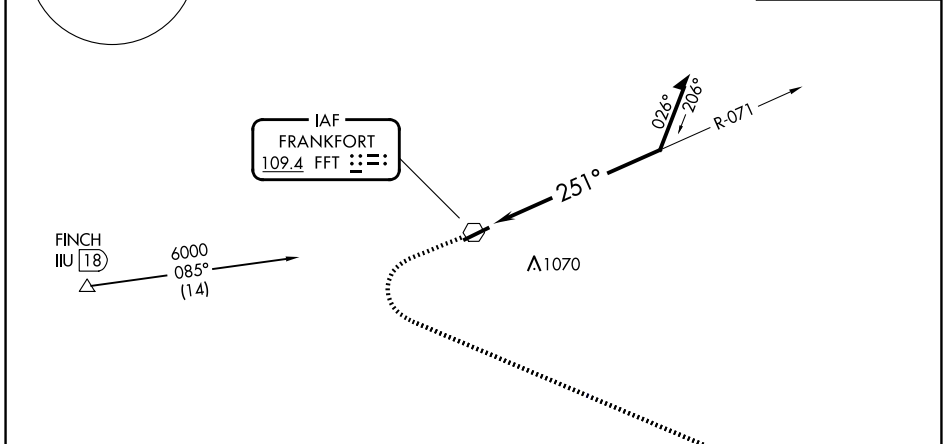
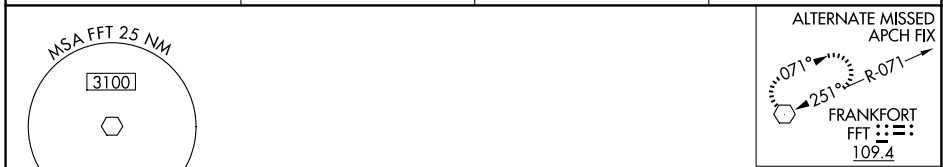
# VOR RWY 25

CAPITAL CITY (F'F'T)

**⚠** Rwy 25 helicopter visibility reduction below 3/4 SM NA. When local altimeter setting not received, use LEX altimeter setting and increase all MDAs 80 feet and S-25 visibility Cat C/D 1/2 SM, increase Circling Cat C 1/2 SM, and Cat D 1/4 SM.

**MISSED APPROACH:**  
Climb to 3100 then left turn direct HYK VOR/DME and hold.

ASOS <b>119.275</b>	LEXINGTON APP CON <b>120.75 298.9</b>	CLNC DEL <b>118.65</b>	UNICOM <b>122.8</b> (CTAF) <b>0</b>
------------------------	--	---------------------------	--



CATEGORY	A	B	C	D
S-25	1440-1	650 (700-1)	1440-1 7/8	650 (700-1 7/8)
CIRCLING	1440-1	627 (700-1)	1440-1 7/8 627 (700-1 7/8)	1440-2 627 (700-2)

MIRL Rwy 7-25 **0**  
REIL Rws 7 and 25 **0**  
FRANKFORT, KENTUCKY  
Amdt 3E 02OCT25

38°11'N-84°54'W

# VOR RWY 25

SE-1, 16 APR 2026 to 14 MAY 2026

SE-1, 16 APR 2026 to 14 MAY 2026