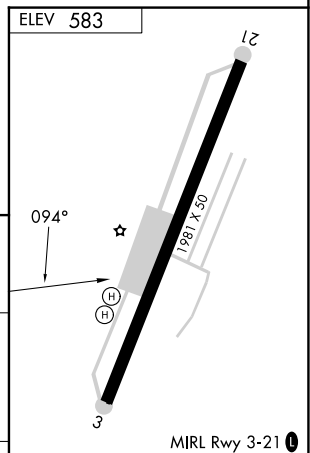
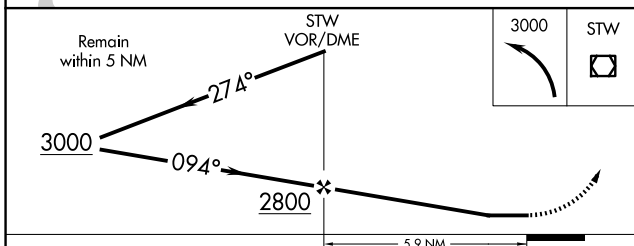
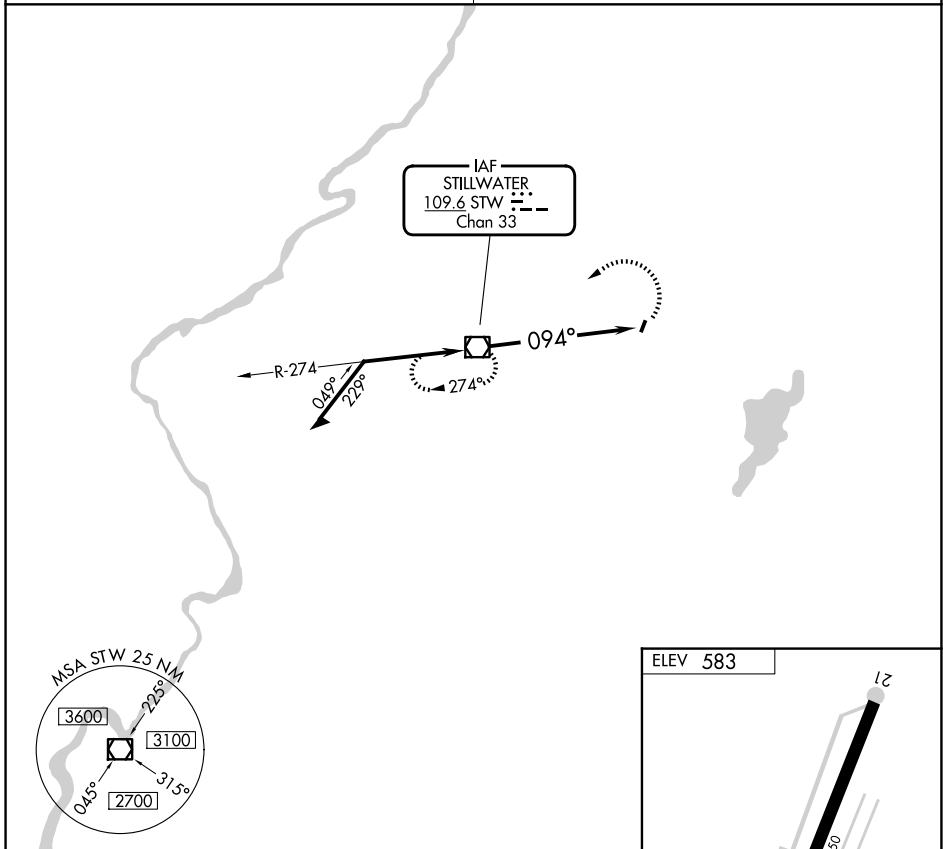


| | | |
|---|------------------------|--|
| VOR/DME STW 109.6 Chan 33 | APP CRS 094° | Rwy Ldg TDZE N/A Apt Elev 583 |
|---|------------------------|--|

VOR-A
AEROFLEX/ANDOVER (12N)

▼ When local altimeter setting not received, use Caldwell altimeter setting and increase MDA 120 feet. Procedure NA at night.
▲ MISSED APPROACH: Climbing left turn to 3000 direct STW VOR/DME and hold.

NEWARK APP CON **123.775 379.9** UNICOM **122.8 (CTAF) 0**



| | | | | | | | | | | |
|----------|--------------------------|---|----|---|-------------------|------|------|------|------|------|
| CATEGORY | A | B | C | D | FAF to MAP 5.9 NM | | | | | |
| CIRCLING | 1560-1¼ 977 (1000-1¼) | | NA | | Knots | 60 | 90 | 120 | 150 | 180 |
| | | | | | Min:Sec | 5:54 | 3:56 | 2:57 | 2:22 | 1:58 |

NE-2, 16 APR 2026 to 14 MAY 2026

NE-2, 16 APR 2026 to 14 MAY 2026