

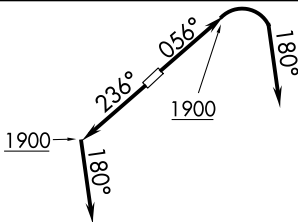
(AHMET5.KKIDS) 25331

AL-5027 (FAA)

CUYAHOGA COUNTY (CGF)
CLEVELAND, OHIO

AHMET FIVE DEPARTURE (RNAV)

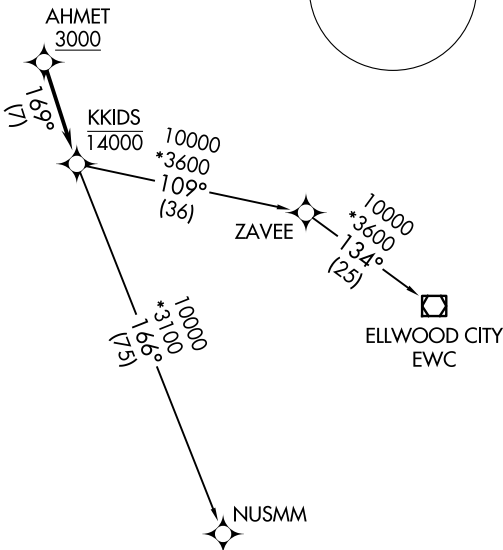
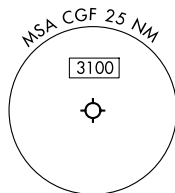
D-ATIS
119.95
CLNC DEL
121.85 (when tower closed)
GND CON
121.85
COUNTY TOWER *
118.5 (CTAF)
CLEVELAND DEP CON
125.35 346.325



**TOP ALTITUDE:
ASSIGNED BY ATC**

RNAV 1 - DME/DME/IRU or GPS.
RADAR required.

TAKEOFF MINIMUMS:
Rwys 6, 24: Standard
with minimum climb of
500' per NM to 1400.



NOTE: Chart not to scale.



DEPARTURE ROUTE DESCRIPTION

TAKEOFF RUNWAY 6: Climb on heading 056° to 1900, then right turn on heading 180° or as assigned by ATC for RADAR vectors to cross AHMET at or above 3000, thence....
TAKEOFF RUNWAY 24: Climb on heading 236° to 1900, then on heading 180° or as assigned by ATC for RADAR vectors to cross AHMET at or above 3000, thence....

....on track 169° to cross KKIDS at or below 14000, then on (transition).
Maintain ATC assigned altitude, expect filed altitude ten minutes after departure.

ELLWOOD CITY TRANSITION (AHMET5.EWC)
NUSMM TRANSITION (AHMET5.NUSMM)

AHMET FIVE DEPARTURE (RNAV)

(AHMET5.KKIDS) 27NOV25

CLEVELAND, OHIO
CUYAHOGA COUNTY (CGF)

EC-2, 16 APR 2026 to 14 MAY 2026

EC-2, 16 APR 2026 to 14 MAY 2026