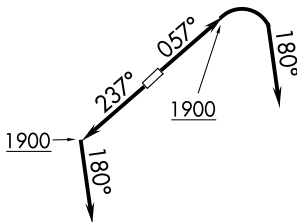


CAVVS FIVE DEPARTURE (RNAV)

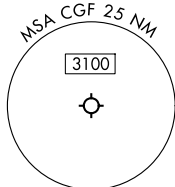
CLEVELAND DEP CON
125.35 346.325
D-ATIS
119.95
CLNC DEL
121.85 (when twr closed)
GND CON
121.85
COUNTY TOWER ★
118.5 (CTAF)

**TOP ALTITUDE:
ASSIGNED BY ATC**

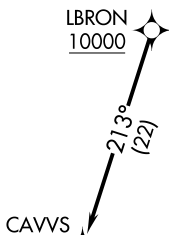


RNAV 1 - DME/DME/IRU or GPS.

RADAR required.



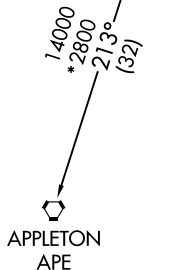
EC-2, 16 APR 2026 to 14 MAY 2026



TAKEOFF MINIMUMS:

Rwys 6, 24: Standard with minimum climb of 500' per NM to 1400.

EC-2, 16 APR 2026 to 14 MAY 2026



DEPARTURE ROUTE DESCRIPTION

TAKEOFF RUNWAY 6: Climb on heading 057° to 1900, then right turn heading 180° or as assigned by ATC for RADAR vectors to cross LBRON at or above 10000, thence....

TAKEOFF RUNWAY 24: Climb on heading 237° to 1900, then on heading 180° or as assigned by ATC for RADAR vectors to cross LBRON at or above 10000, thence....

....on track 213° to CAVVS, then on (transition).
Maintain ATC assigned altitude, expect filed altitude ten minutes after departure.

APPLETON TRANSITION (CAVVS5.APE)

NOTE: Chart not to scale.

CAVVS FIVE DEPARTURE (RNAV)

(CAVVS5.CAVVS) 27NOV25