

WAAS CH 42528 W24A	APP CRS 238°	Rwy Ldg 5000 TDZE 873 Apt Elev 876
---------------------------------	------------------------	---

RNAV (GPS) RWY 24

CUYAHOGA COUNTY (CGF)

RNP APCH - GPS.

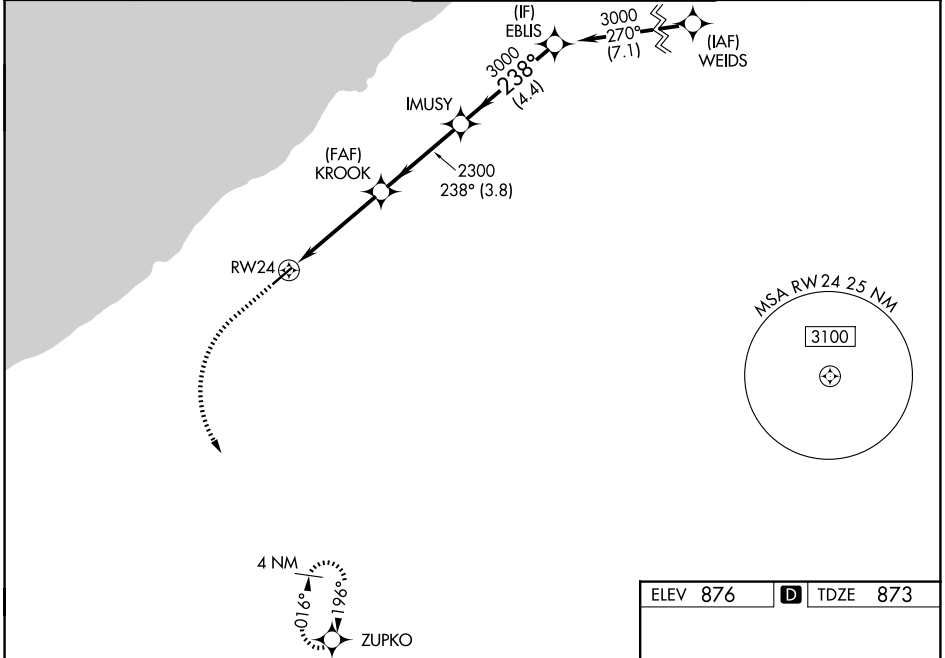
⚠ For uncompensated Baro-VNAV systems, LNAV/VNAV NA below -1.6°C or above 54°C. Baro-VNAV and VDP NA when using CLE altimeter setting. When local altimeter setting not received, use CLE altimeter setting and increase LPV DA to 1131 feet; increase LNAV/VNAV DA to 1263 feet and all visibilities 1/8 SM. Increase all MDAs 60 feet and LNAV visibility Cat C/D 1/4 SM, and Circling visibility Cat C/D 1/4 SM. For inop ALS increase LNAV Cat C, D visibility to 1 1/8 SM.

MALSR

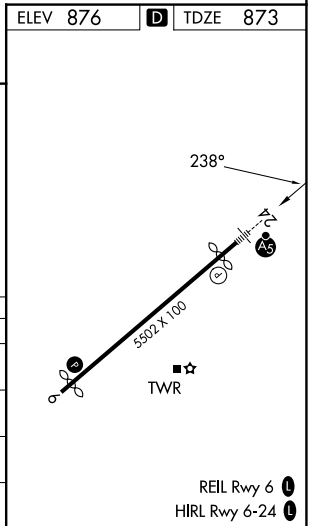


MISSED APPROACH:
Climb to 2500 then climbing left turn to 3000 direct ZUPKO and hold.

D-ATIS 119.95	CLEVELAND APP CON 125.35 346.325	COUNTY TOWER★ 118.5 (CTAF) 0	GND CON 121.85
-------------------------	--	--	--------------------------



2500 ↑	3000 ↷	ZUPKO ✧		
IMUSY	EBLIS			
KROOK 2300	3000	3000		
1.1 NM to RW24	3.2 NM	3.8 NM		
1.1 NM	3.2 NM	4.4 NM		
GP 3.00° TCH 44				
CATEGORY	A	B	C	D
LPV DA		1073-1/2	200 (200-1/2)	
LNAV/VNAV DA		1205-1/2	332 (400-1/2)	
LNAV MDA	1280-1/2	407 (500-1/2)	1280-3/4	407 (500-3/4)
CIRCLING	1420-1 544 (600-1)	1500-1 624 (700-1)	1560-2 684 (700-2)	1640-2 1/2 764 (800-2 1/2)



EC-2, 16 APR 2026 to 14 MAY 2026

EC-2, 16 APR 2026 to 14 MAY 2026