

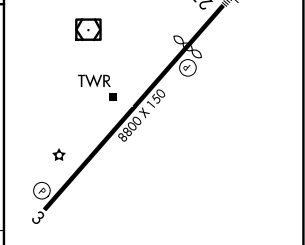
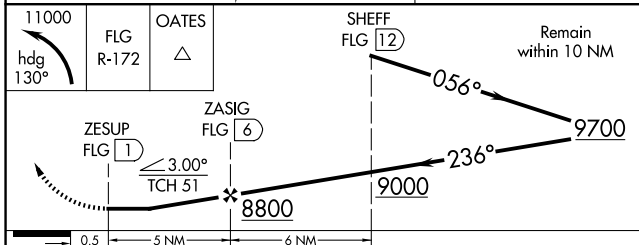
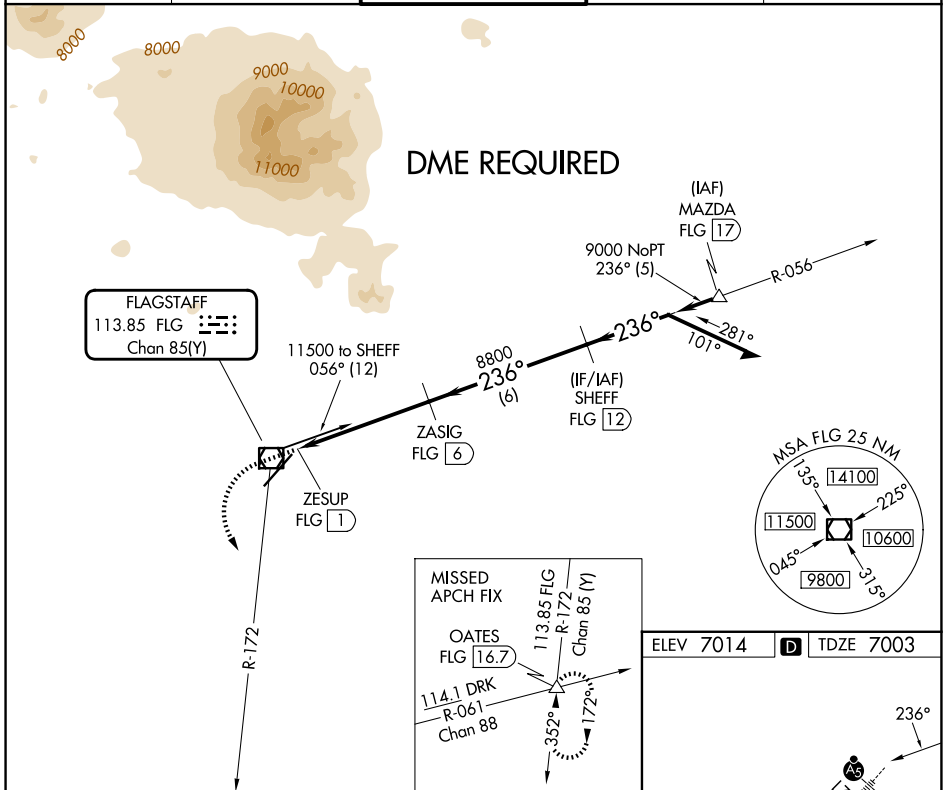
VOR/DME FLG <b>113.85</b> Chan <b>85(Y)</b>	APP CRS <b>236°</b>	Rwy Ldg <b>7000</b> TDZE <b>7003</b> Apt Elev <b>7014</b>
---	------------------------	---

# VOR RWY 21

FLAGSTAFF PULLIAM (FLG)

<p>Rwy 21 helicopter visibility reduction below 1 SM NA. DME required. Inop table does not apply to S-21 Cats A/B. Night landing: Rwy 21, operational VGSi required, remain on or above VGSi glidepath until threshold.</p>	<p>MALS R</p>	<p>MISSED APPROACH: Climbing left turn to 11000 on heading 130° and FLG R-172 to OATES INT/16.7 DME, continue climb-in-hold.</p>

ATIS <b>125.8</b>	PHOENIX APP CON <b>126.375 236.775</b>	FLAGSTAFF TOWER ★ <b>134.55 (CTAF) 239.25</b>	GND CON <b>121.9</b>	UNICOM <b>122.95</b>
----------------------	---	--	-------------------------	-------------------------



CATEGORY	A	B	C	D
S-21	7520-1	517 (600-1)		
CIRCLING	7520-1 506 (600-1)	7560-1 546 (600-1)	8100-3 1086 (1100-3)	8560-3 1546 (1600-3)

HIRL Rwy 3-21

SW-4, 16 APR 2026 to 14 MAY 2026

SW-4, 16 APR 2026 to 14 MAY 2026