

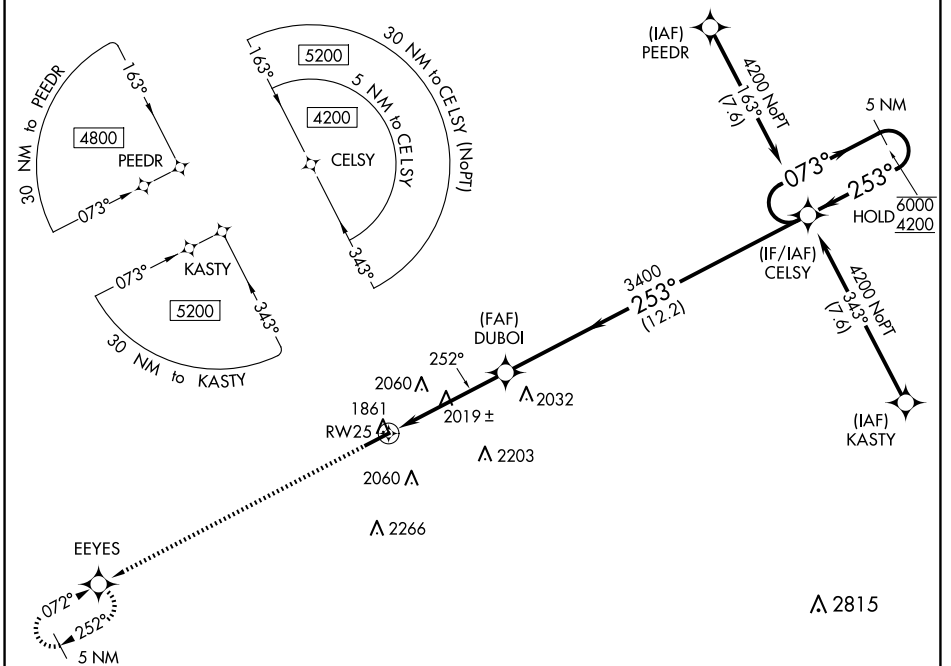
WAAS CH 97407 W25A	APP CRS 252°	Rwy Idg TDZE Apt Elev	5503 1817 1817
--	------------------------	-----------------------------	---

RNAV (GPS) RWY 25

DUBOIS RGNL (DUJ)

RNP APCH.	MALSR	MISSED APPROACH: Climb to 4200 direct EEYES and hold.
<p>⚠ Circling NA for Cat D south of Rwy 7-25. For uncompensated Baro-VNAV systems, LNAV/VNAV NA below -21°C or above 54°C. For inop ALS increase LNAV Cat C/D visibility to 1½ SM.</p>		

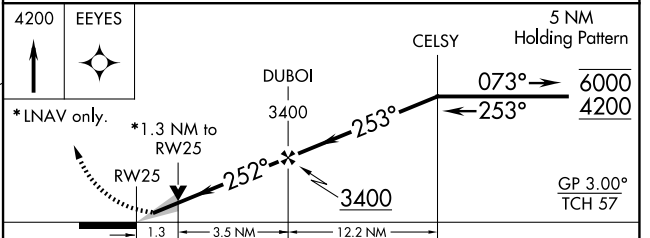
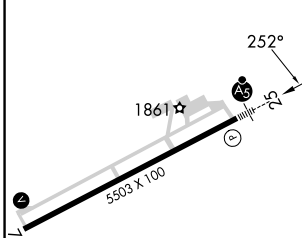
ASOS 119.025	CLEVELAND CENTER 126.725 291.65	UNICOM 123.0 (CTAF) ①
------------------------	---	--



NE-4, 16 APR 2026 to 14 MAY 2026

NE-4, 16 APR 2026 to 14 MAY 2026

ELEV	1817	D	TDZE	1817
------	------	----------	------	------



CATEGORY	A	B	C	D
LPV DA	2017-½ 200 (200-½)			
LNAV/VNAV DA	2140-½ 323 (400-½)			
LNAV MDA	2280-½ 463 (500-½)		2280-1 463 (500-1)	
C CIRCLING	2320-1 503 (600-1)	2360-1 543 (600-1)	2380-1½ 563 (600-1½)	2400-2 583 (600-2)

HIRL Rwy 7-25 **①**
REIL Rwy 7 **①**