

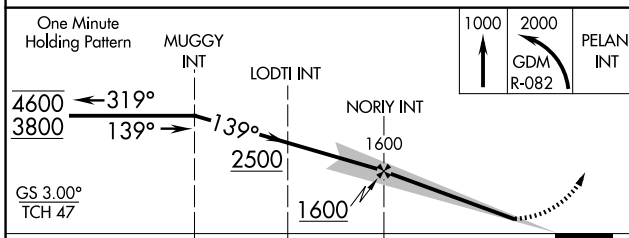
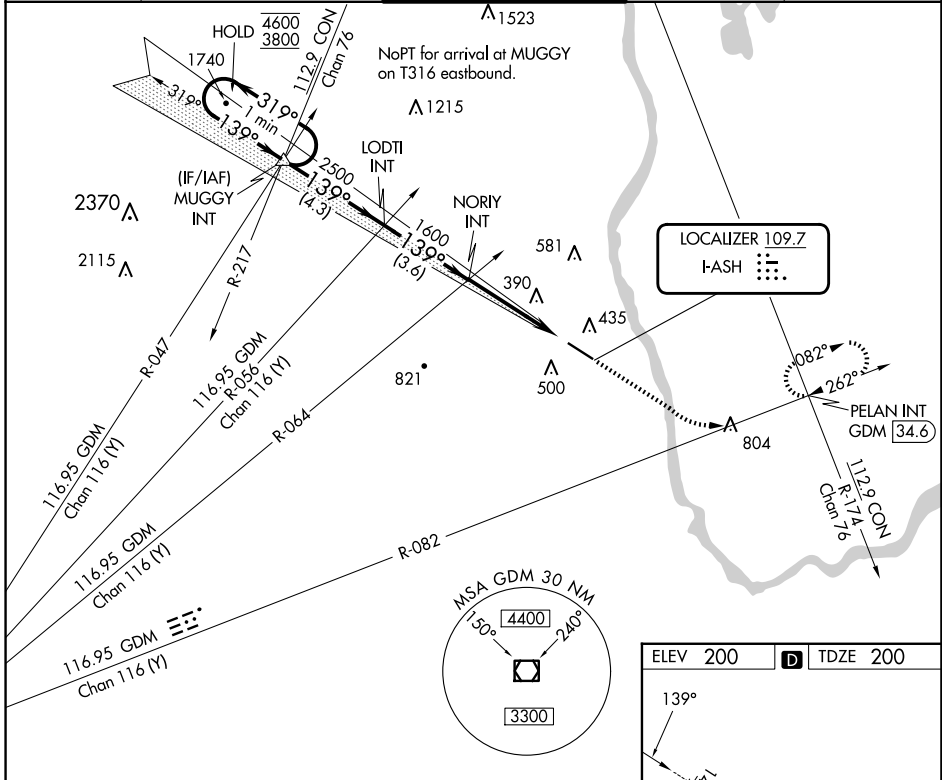
LOC I-ASH 109.7	APP CRS 139°	Rwy Idg TDZE Apt Elev	5650 200 200
---------------------------	------------------------	-----------------------------	---

ILS or LOC RWY 14

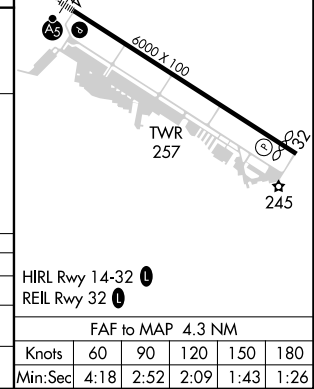
BOIRE FLD (ASH)

RADAR required for procedure entry.		MALS	MISSED APPROACH: Climb to 1000 then climbing left turn to 2000 on GDM VOR/DME R-082 to PELAN INT/GDM R-082/34.6 DME and hold.
For inop ALS, increase S-LOC Cat C/D visibility to 1 3/4 SM.			

ATIS 125.1	BOSTON APP CON 124.9 269.075	NASHUA TOWER * 133.2 (CTAF)	GND CON 121.8	CLNC DEL 121.8
----------------------	--	---------------------------------------	-------------------------	--------------------------



CATEGORY	A	B	C	D
S-ILS 14	400-1/2 200 (200-1/2)			
S-LOC 14	820-1/2	620 (700-1/2)	820-1 3/8	620 (700-1 3/8)
CIRCLING	840-1 640 (700-1)	860-1 660 (700-1)	920-2 720 (800-2)	980-2 1/2 780 (800-2 1/2)



NE-1, 16 APR 2026 to 14 MAY 2026

NE-1, 16 APR 2026 to 14 MAY 2026

ELEV 200	D	TDZE 200			
HIRL Rwy 14-32					
REIL Rwy 32					
FAF to MAP 4.3 NM					
Knots	60	90	120	150	180
Min:Sec	4:18	2:52	2:09	1:43	1:26