


LOC I-HUM	APP CRS	Rwy Ldg	6143
108.5	179°	TDZE	8
		Apt Elev	9

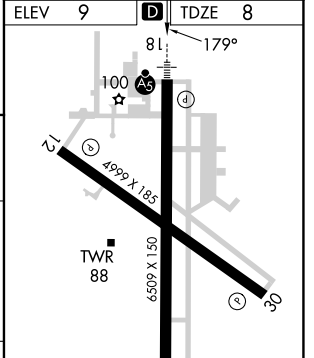
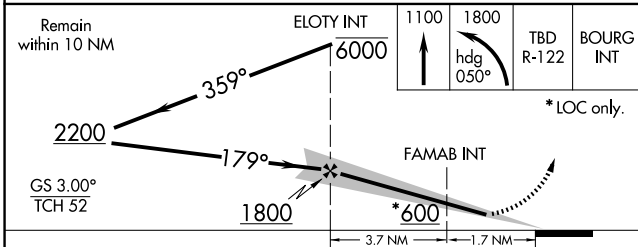
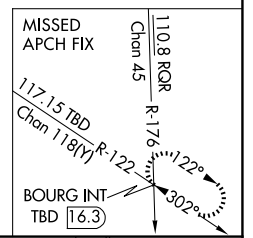
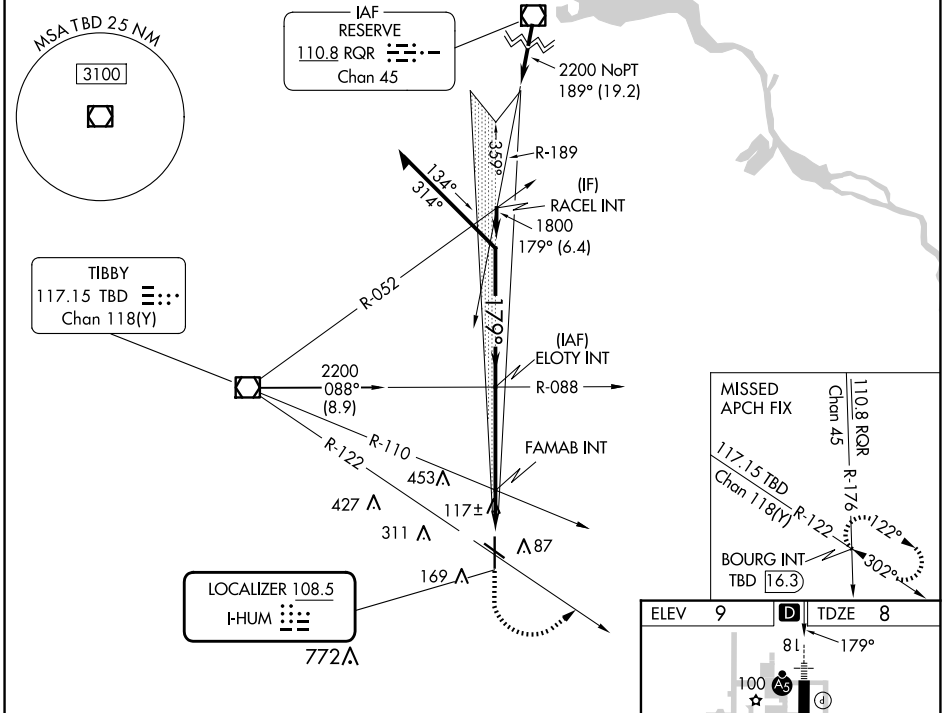
# ILS or LOC RWY 18

HOUMA-TERREBONNE (HUM)

⚠ When local altimeter setting not received, use Louis Armstrong New Orleans Intl altimeter setting: increase DA to 285 feet; increase all MDA 80 feet and S-LOC 18 Cat C/D visibility ¼ SM and Circling Cat C/D visibility ¼ SM. For inop ALS increase S-LOC 18 Cat C/D visibility to 1 SM. For inop ALS when using Louis Armstrong New Orleans Intl altimeter setting increase S-ILS 18 all Cats visibility ⅓ SM.

**MALSRS**  
  
**MISSED APPROACH:** Climb to 1100 then climbing left turn to 1800 on heading 050° and TBD VOR/DME R-122 to BOURG INT/TBD 16.3 DME and hold.

ATIS	NEW ORLEANS APP CON	HOUMA TOWER ★	GND CON	CLNC DEL	UNICOM
120.25	118.9 350.35	125.3 (CTAF) 0 346.3	123.875	118.9 (When twr closed)	122.95



CATEGORY	A	B	C	D
S-ILS 18	208-½ 200 (200-½)			
S-LOC 18	380-½	372 (400-½)	380-⅝	372 (400-⅝)
CIRCLING	480-1	471 (500-1)	760-2¼ 751 (800-2¼)	760-2½ 751 (800-2½)

REIL Rwy	12, 30, and 36	36			
MRL Rwy	12-30 and 18-36				
FAF to MAP 5.4 NM					
Knots	60	90	120	150	180
Min:Sec	5:24	3:36	2:42	2:10	1:48

SC-4, 16 APR 2026 to 14 MAY 2026

SC-4, 16 APR 2026 to 14 MAY 2026