

VOR/DME TBD 117.15 Chan 118(Y)	APP CRS 302°	Rwy Idg 4999 TDZE 9 Apt Elev 9
--	------------------------	---

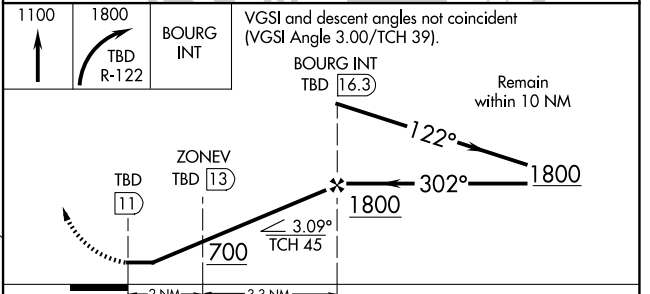
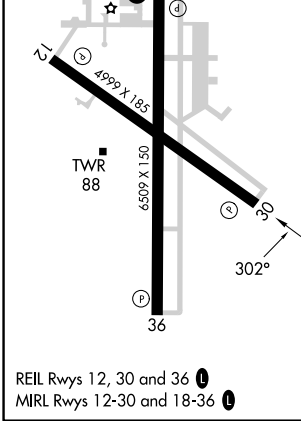
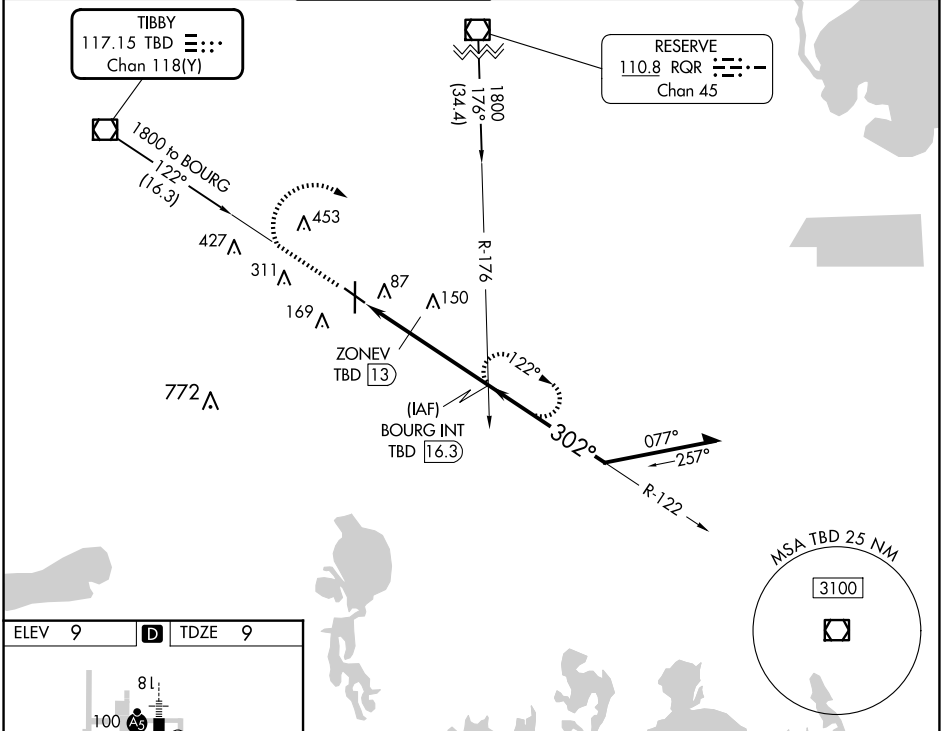
VOR/DME RWY 30

HOUMA-TERREBONNE (HUM)

⚠ Rwy 30 helicopter visibility reduction below 3/4 SM NA. When local altimeter setting not received, use Louis Armstrong New Orleans Intl altimeter setting and increase all MDAs 80 feet, and visibility Cats C and D 1/4 SM.

MISSED APPROACH: Climb to 1100 then climbing right turn to 1800 via TBD VOR/DME R-122 to BOURG INT/TBD 16.3 DME and hold.

ATIS 120.25	NEW ORLEANS APP CON 118.9 350.35	HOUMA TOWER ★ 125.3 (CTAF) 346.3	GND CON 123.875	CLNC DEL 118.9 (When twr closed)	UNICOM 122.95
-----------------------	--	--	---------------------------	---	-------------------------



CATEGORY	A	B	C	D
S-30	400-1	391 (400-1)	400-1 1/8	391 (400-1 1/8)
C CIRCLING	480-1	471 (500-1)	760-2 1/4 751 (800-2 1/4)	760-2 1/2 751 (800-2 1/2)

SC-4, 16 APR 2026 to 14 MAY 2026

SC-4, 16 APR 2026 to 14 MAY 2026