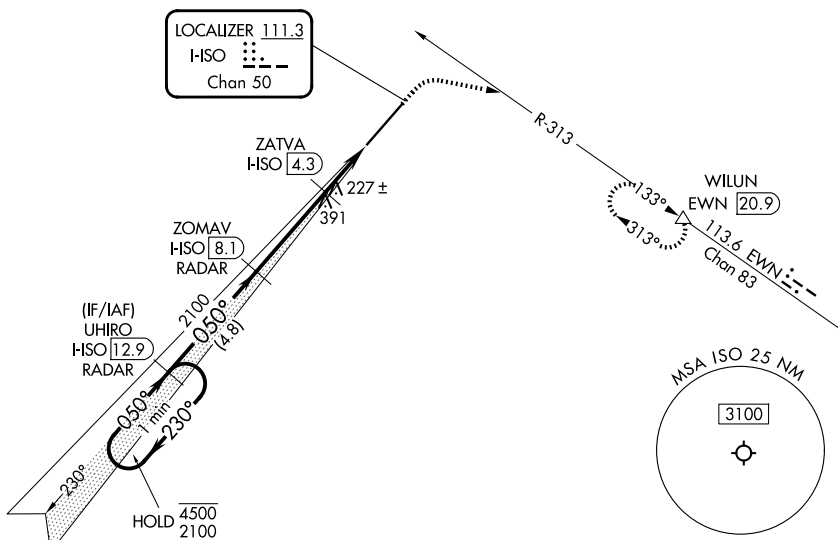


LOC/DME I-ISO <b>111.3</b> Chan <b>50</b>	APP CRS <b>050°</b>	Rwy Ldg <b>10960</b> TDZE <b>93</b> Apt Elev <b>93</b>
---	------------------------	--

# ILS or LOC RWY 5

KINSTON RGNL JETPORT AT STALLINGS FLD (ISO)

RADAR required for procedure entry. DME required.		MALSR 	MISSED APPROACH: Climb to 600 then climbing right turn to 2500 on heading 110° and on EWN VOR/DME R-313 to WILUN/EWN 20.9 DME and hold.	
AWOS-3 <b>132.75</b>	SEYMOUR JOHNSON APP CON * <b>127.3 273.6</b>		KINSTON TOWER * <b>120.6 (CTAF) 0 335.55</b>	GND CON <b>121.9</b>



SE-2, 16 APR 2026 to 14 MAY 2026

SE-2, 16 APR 2026 to 14 MAY 2026

ELEV 93		TDZE 93	
---------	--	---------	--

One Minute Holding Pattern

GS 3.00° TCH 59

CATEGORY	A	B	C	D	E
S-ILS 5	293/24		200 (200-1/2)		
S-LOC 5	480/24	387 (400-1/2)	480/35		387 (400-3/8)
CIRCLING	540-1 447 (500-1)	560-1 467 (500-1)	700-1 3/4 607 (700-1 3/4)	700-2 607 (700-2)	780-2 1/2 687 (700-2 1/2)

REIL Rwy 23

HIRL Rwy 5-23

# ILS or LOC RWY 5