

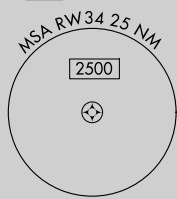
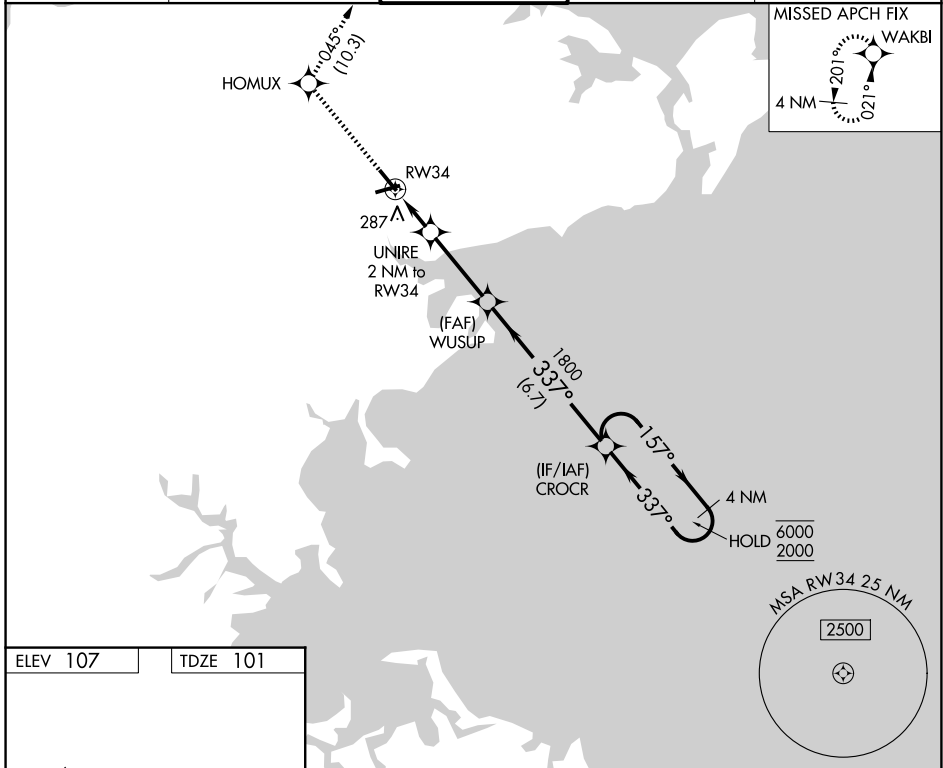
APP CRS 337°	Rwy Ldg TDZE Apt Elev	5001 101 107
------------------------	-----------------------------	---

RNAV (GPS) RWY 34

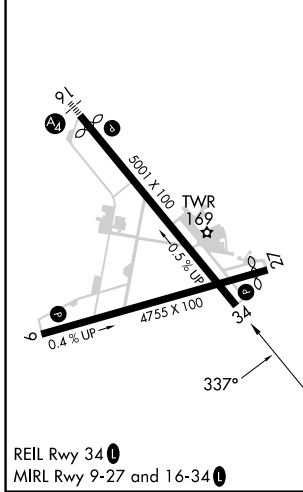
BEVERLY RGNL (BVY)

RNP APCH - GPS.	MISSED APPROACH: Climb to 2000 direct HOMUX and on track 045° to WAKBI and hold.
<p>Procedure NA at night.</p> <p>Rwy 34 helicopter visibility reduction below 1 SM NA.</p>	

ATIS 119.2	BOSTON APP CON 124.4 279.6	BEVERLY TOWER★ 125.2 (CTAF) 0	GND CON 121.6	UNICOM 122.95
----------------------	--------------------------------------	---	-------------------------	-------------------------



ELEV 107	TDZE 101
----------	----------



2000	HOMUX	tr 045°	WAKBI	
				4 NM Holding Pattern
	UNIRE 2 NM to RW34	WUSUP	CROCR	
		3.00° TCH 54	1800	157° → 6000 ← 337° 2000
	RW34			
	2 NM	3.2 NM	6.7 NM	
CATEGORY	A	B	C	D
LNAV MDA	540-1	439 (500-1)	540-1¼	439 (500-1¼)
CIRCLING	600-1	493 (500-1)	820-2 713 (800-2)	820-2¼ 713 (800-2¼)

NE-1, 16 APR 2026 to 14 MAY 2026

NE-1, 16 APR 2026 to 14 MAY 2026