

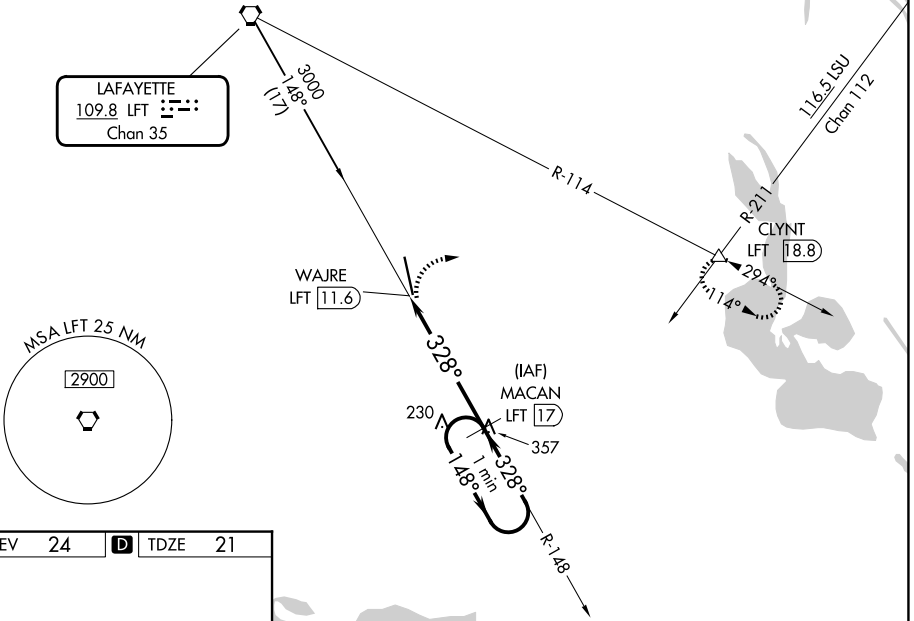
VORTAC LFT <b>109.8</b> Chan 35	APP CRS <b>328°</b>	Rwy Ldg TDZE <b>21</b> Apt Elev <b>24</b>
---------------------------------------	------------------------	---

**VOR RWY 35**  
ACADIANA RGNL (A.R.A.)

	Circling NA to Rwy's 17W and 35W. DME required. Inop table does not apply.	MALSR 	MISSED APPROACH: Climbing right turn to 2000 on heading 080° and LFT R-114 to CLYNT INT/LFT 18.8 DME and hold.

ASOS <b>133.325</b>	LAFAYETTE APP CON* <b>121.1 268.7</b>	ACADIANA TOWER* <b>125.0 (CTAF) 0 239.3</b>	GND CON <b>121.7</b>	UNICOM <b>122.95</b>
------------------------	--	--	-------------------------	-------------------------

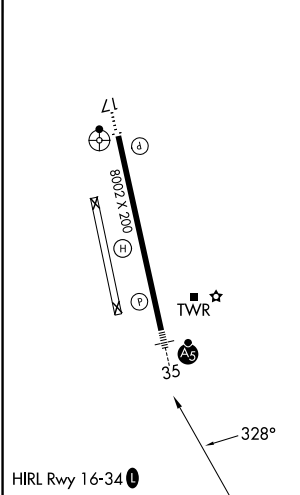
**DME REQUIRED**



SC-4, 16 APR 2026 to 14 MAY 2026

SC-4, 16 APR 2026 to 14 MAY 2026

ELEV 24	<b>D</b>	TDZE 21
---------	----------	---------



2000 hdg 080° R-114	CLYNT 	MACAN LFT 17	One Minute Holding Pattern		
WAJRE LFT 11.6	LFT 13 ≤ 3.00° TCH 52	1800 ← 328° →	1800		
CATEGORY	A	B	C	D	E
S-35	540-1/2	519 (600-1/2)	540-13/8	519 (600-13/8)	
CIRCLING	540-1	516 (600-1)	600-1 1/2 576 (600-1 1/2)	680-2 656 (700-2)	900-3 876 (900-3)