

VORTAC LFT <b>109.8</b> Chan 35	APP CRS <b>145°</b>	Rwy Ldg TDZE <b>24</b> Apt Elev <b>24</b>
---------------------------------------	------------------------	---

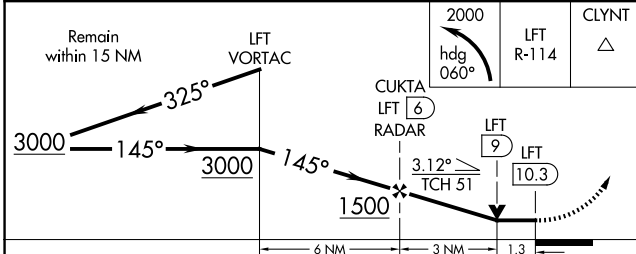
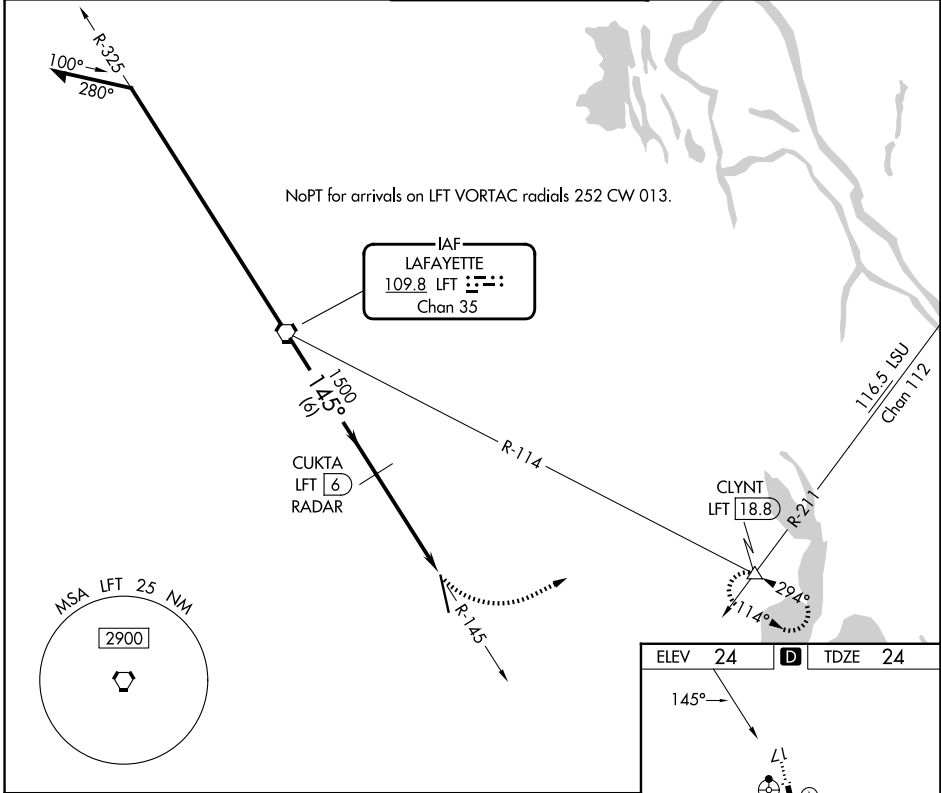
# VOR or TACAN RWY 17

ACADIANA RGNL (A.R.A.)

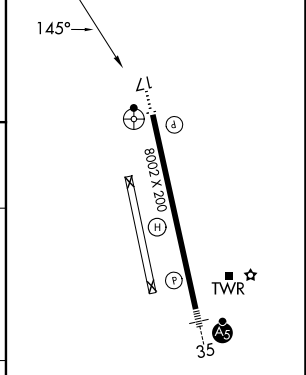
▼ Circling NA to Rwy's 17W and 35W.  
 ▲ DME or RADAR required.  
 For inop ALS, increase S-17 Cat E visibility to 1 3/8 mile.

ODALS  
 ...  
 MISSED APPROACH: Climbing left turn to 2000 on heading 060° and LFT VORTAC R-114 to CLYNT INT/18.8 DME and hold.

ASOS <b>133.325</b>	LAFAYETTE APP CON★ <b>121.1 268.7</b>	ACADIANA TOWER★ <b>125.0 (CTAF) 0 239.3</b>	GND CON <b>121.7</b>	UNICOM <b>122.95</b>
------------------------	--	--	-------------------------	-------------------------



ELEV 24	TDZE 24
---------	---------



CATEGORY	A	B	C	D	E
S-17	500-3/4	476 (500-3/4)	500-1 1/4	476 (500-1 1/4)	
CIRCLING	500-1	476 (500-1)	600-1 1/2 576 (600-1 1/2)	680-2 656 (700-2)	900-3 876 (900-3)

HIRL Rwy 17-35	
FAF to MAP 4.3 NM	
Knots	60 90 120 150 180
Min:Sec	4:18 2:52 2:09 1:43 1:26

SC-4, 16 APR 2026 to 14 MAY 2026

SC-4, 16 APR 2026 to 14 MAY 2026