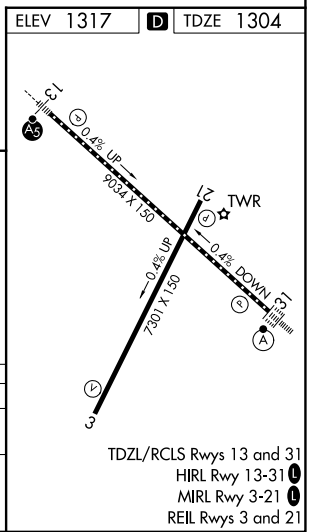
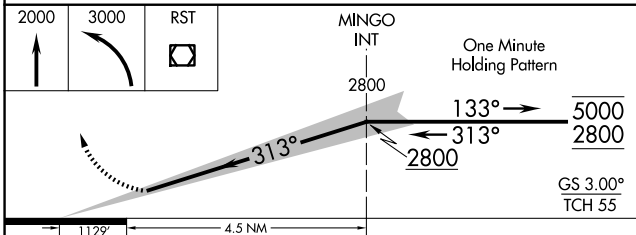
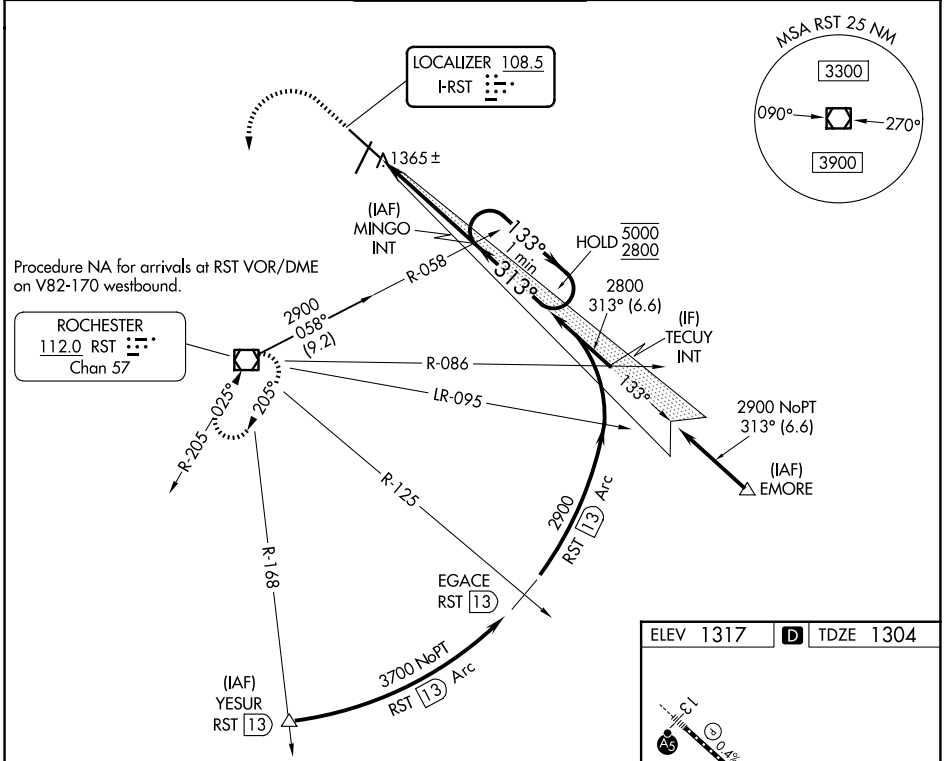


LOC I-RST <b>108.5</b>	APP CRS <b>313°</b>	Rwy Ldg TDZE Apt Elev	<b>9033</b> <b>1304</b> <b>1317</b>
---------------------------	------------------------	-----------------------------	-------------------------------------------

# ILS Z RWY 31 (SA CAT I)

ROCHESTER INTL (RST)

DME required for procedure entry at YESUR.		ALSf-2	MISSED APPROACH: Climb to 2000 then climbing left turn to 3000 direct RST VOR/DME and hold.	
Requires specific OPSPEC, MSPEC, or LOA approval and use of HUD to DH. Procedure NA when tower closed.				
ATIS <b>120.5</b>	ROCHESTER APP CON* <b>119.8 251.125</b>	ROCHESTER TOWER* <b>118.3 (CTAF) 257.8</b>	GND CON <b>121.9</b>	UNICOM <b>122.95</b>



CATEGORY	A	B	C	D
S-ILS 31	RA 204/14 150 DA 1454			

**SA CATEGORY I ILS - SPECIAL AIRCREW & AIRCRAFT CERTIFICATION REQUIRED**

NC-1, 16 APR 2026 to 14 MAY 2026

NC-1, 16 APR 2026 to 14 MAY 2026