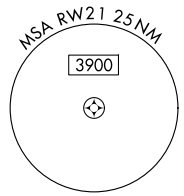
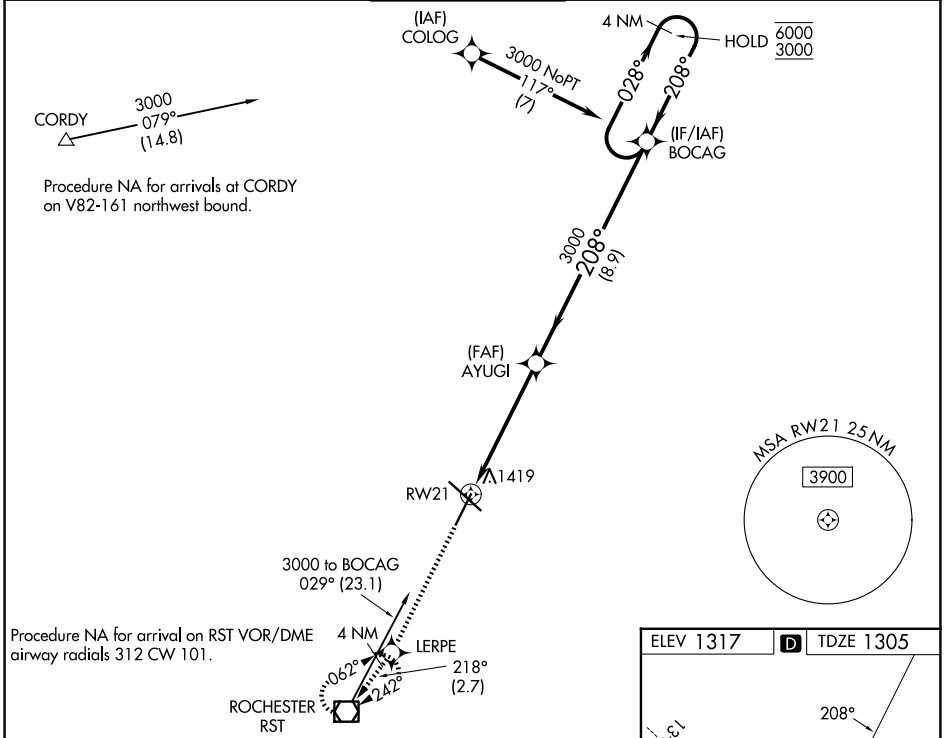


WAAS CH <b>57922</b> <b>W21A</b>	APP CRS <b>208°</b>	Rwy Ldg TDZE Apt Elev	<b>7300</b> <b>1305</b> <b>1317</b>
--	------------------------	-----------------------------	---

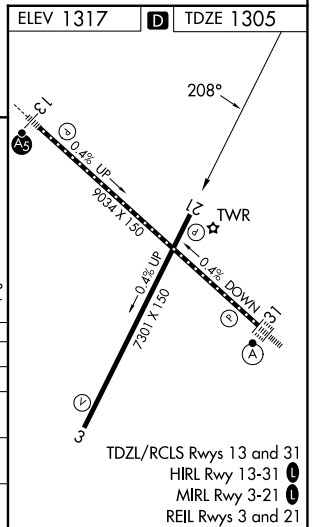
# RNAV (GPS) RWY 21

ROCHESTER INTL (RST)

RNP APCH - GPS.		MISSED APPROACH: Climb to 3000 direct LERPE and on track 218° to RST VOR/DME and hold.	
ATIS <b>120.5</b>	ROCHESTER APP CON ★ <b>119.8 251.125</b>	ROCHESTER TOWER ★ <b>118.3 (CTAF) 0 257.8</b>	GND CON <b>121.9</b>
		UNICOM <b>122.95</b>	



3000	LERPE	tr 218°	RST	AYUGI	BOACAG	4 NM Holding Pattern
↑	✦		◻	3000		
		1.1 NM to RWY 21				
				208°	028°	6000
				3000	← 208°	3000
						GP 3.00° TCH 50
		1.1 NM	4.2 NM	8.9 NM		
CATEGORY	A	B	C	D		
LPV DA		1555-1	250 (300-1)			
LNAV/VNAV DA		1603-1	298 (300-1)			
LNAV MDA		1680-1	375 (400-1)			
CIRCLING	1720-1 403 (500-1)	1780-1 463 (500-1)	1900-1½ 583 (600-1½)	1900-2 583 (600-2)		



NC-1, 16 APR 2026 to 14 MAY 2026

NC-1, 16 APR 2026 to 14 MAY 2026