

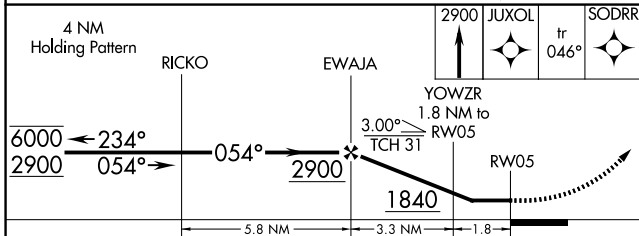
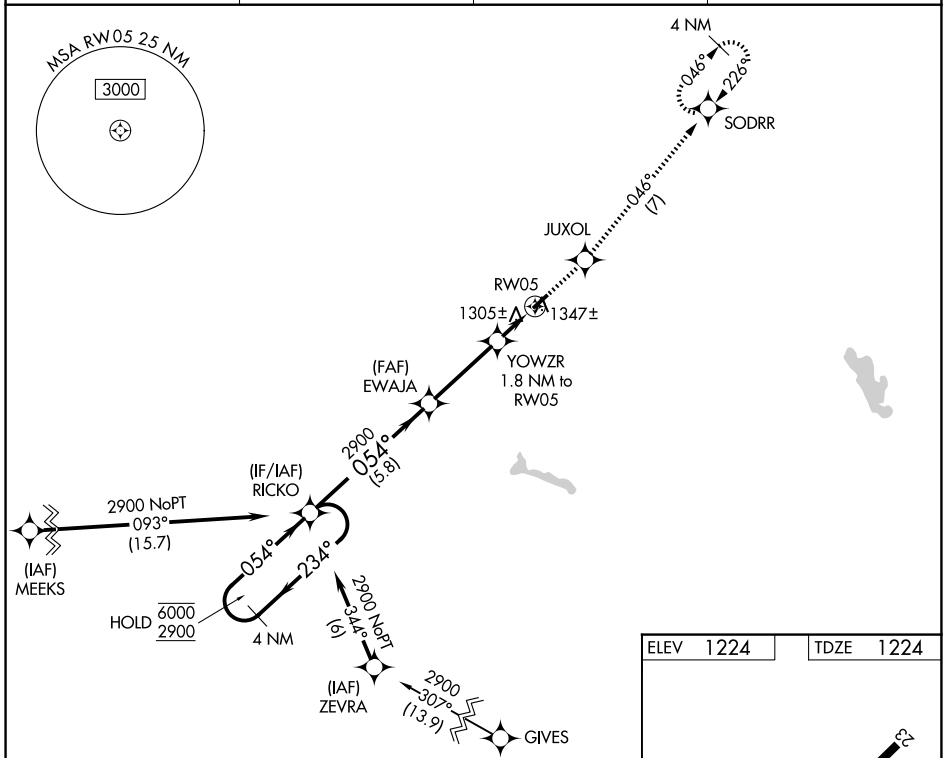
WAAS CH 69223 W05A	APP CRS 054°	Rwy Ldg TDZE Apt Elev	3318 1224 1224
--	------------------------	-----------------------------	---

RNAV (GPS) RWY 5

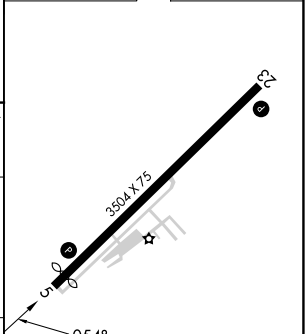
GALLION MUNI (GQQ)

RNP APCH - GPS.	MISSED APPROACH: Climb to 2900 direct JUXOL and on track 046° to SODRR and hold.
<p>▼ Rwy 5 helicopter visibility reduction below 1 SM NA.</p> <p>▲ NA Straight-in Rwy 5 NA at night, Circling Rwy 5 NA at night. Use MFD altimeter setting.</p>	

MFD ASOS 125.3	CLEVELAND APP CON * 128.35 360.65	CLNC DEL 126.8	UNICOM 122.8 (CTAF) 0
--------------------------	---	--------------------------	---------------------------------



ELEV 1224	TDZE 1224
-----------	-----------



CATEGORY	A	B	C	D
LP MDA	1600-1 376 (400-1)			NA
LNAV MDA	1640-1	416 (500-1)	1640-1½ 416 (500-1½)	NA
CIRCLING	1740-1 516 (600-1)	1960-1 736 (800-1)	1960-2 736 (800-2)	NA

MIRL Rwy 5-23 0
REIL Rwy 5 and 23 0

EC-2, 16 APR 2026 to 14 MAY 2026

EC-2, 16 APR 2026 to 14 MAY 2026