

VORTAC RBV 113.8 Chan 85	APP CRS 288°	Rwy Idg 3975 TDZE 118 Apt Elev 118
--	------------------------	---

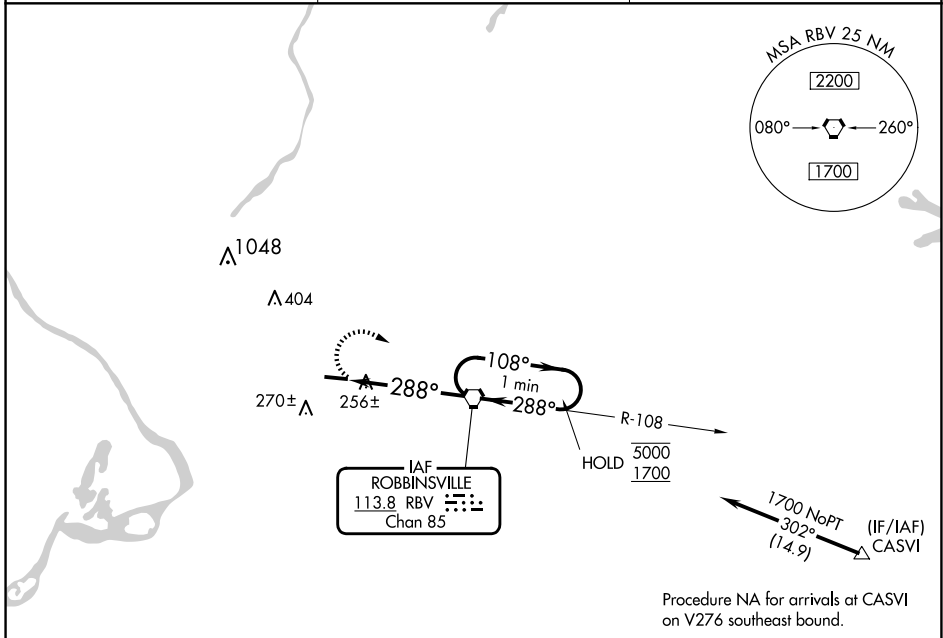
VOR RWY 29

TRENTON-ROBBINSVILLE (N87)

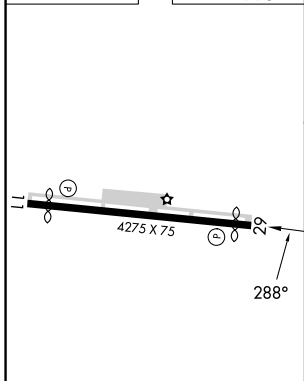
Procedure NA at night.
NA Rwy 29 helicopter visibility reduction below 1 SM NA.
 Use Wrightstown altimeter setting.

MISSED APPROACH: Climbing right turn to 1700 direct RBV VORTAC and hold.

MC GUIRE APP CON 126.475 363.8	UNICOM 123.0 (CTAF)	123.3 0
--	-------------------------------	----------------



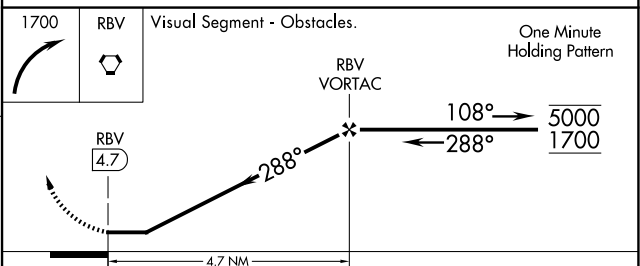
ELEV 118	TDZE 118
-----------------	-----------------



MIRL Rwy 11-29 **0**

FAF to MAP 4.7 NM

Knots	60	90	120	150	180
Min:Sec	4:42	3:08	2:21	1:53	1:34



CATEGORY	A	B	C	D
S-29	620-1	502 (600-1)	620-1 $\frac{3}{8}$	502 (600-1 $\frac{3}{8}$)
CIRCLING	680-1	562 (600-1)	680-1 $\frac{1}{2}$	760-2 642 (700-2)

NE-2, 16 APR 2026 to 14 MAY 2026

NE-2, 16 APR 2026 to 14 MAY 2026