

APP CRS	Rwy Ldg	4100
331°	TDZE	750
	Apt Elev	750

RNAV (GPS) RWY 33

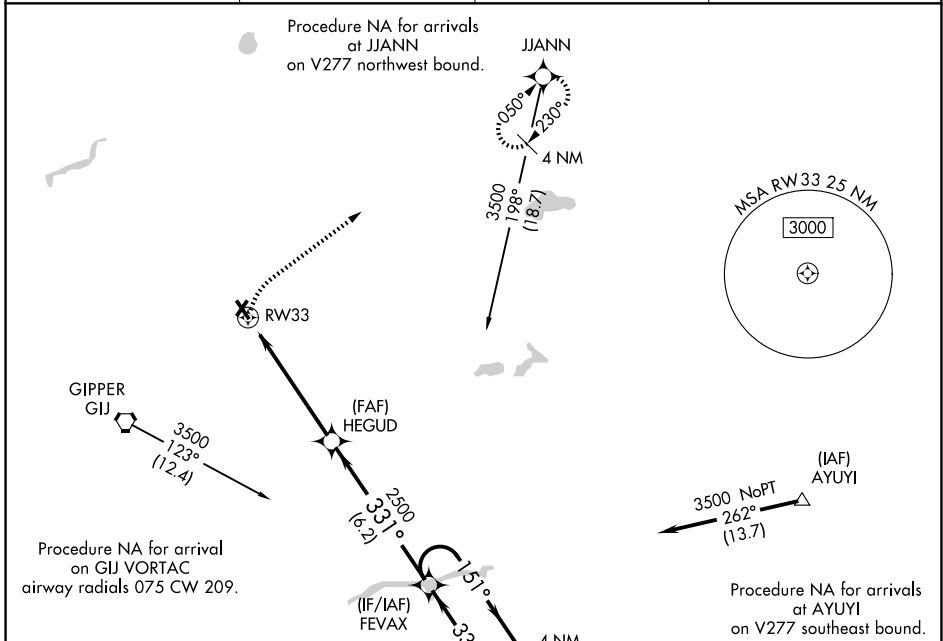
JERRY TYLER MEML (3TR)

RNP APCH.

▼ Procedure NA at night. Rwy 33 helicopter visibility reduction below 1 SM NA.
 ▲ NA Use South Bend altimeter setting; when not received, use Elkhart altimeter setting; increase all MDA 20 feet and LNAV Cat C visibility 1/2 SM.

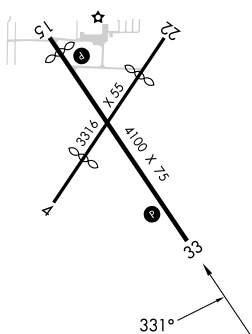
MISSED APPROACH: Climbing right turn to 3000 direct JJANN and hold.

SBN ASOS	SOUTH BEND APP CON *	GCO	UNICOM
120.675	118.55 257.8	121.725	122.8 (CTAF) 0



ELEV 750	TDZE 750
----------	----------

MIRL Rwy 15-33
 REIL Rwy 15 and 33



3000	JJANN	Visual Segment - Obstacles.	4 NM	
			FEVAX Holding Pattern	
RW33	HEGUD	331°	151°	
		2500	6000	
			3500	
	5.4 NM	6.2 NM		
CATEGORY	A	B	C	D
LNAV MDA	1320-1	570 (600-1)	1320-1½ 570 (600-1½)	NA
CIRCLING	1320-1	570 (600-1)	1460-2 710 (800-2)	NA

EC-1, 16 APR 2026 to 14 MAY 2026

EC-1, 16 APR 2026 to 14 MAY 2026