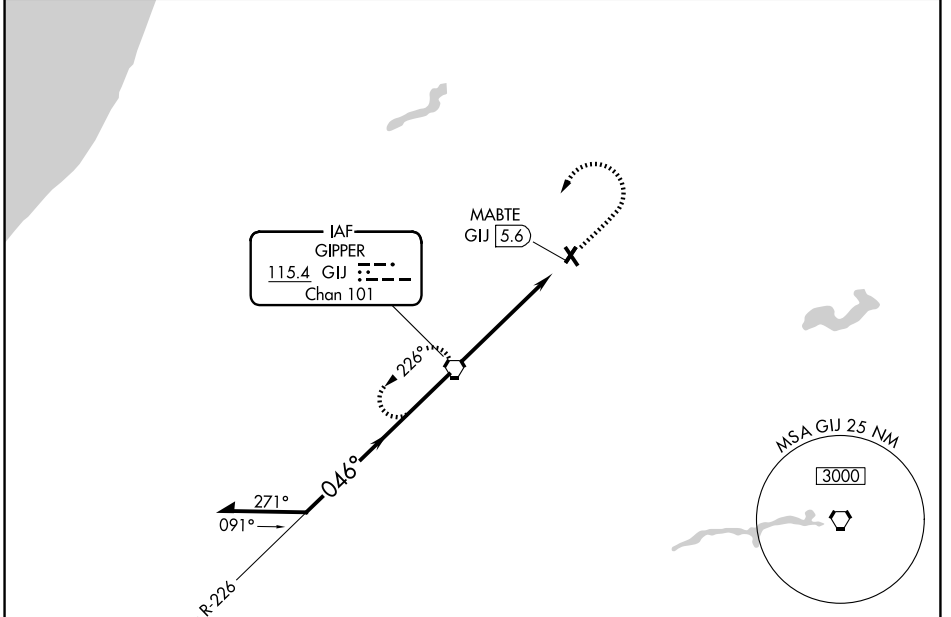


VORTAC GIJ <b>115.4</b> Chan 101	APP CRS <b>046°</b>	Rwy Ldg TDZE Apt Elev <b>750</b>	<b>N/A</b> <b>N/A</b> <b>750</b>
--	------------------------	--	--

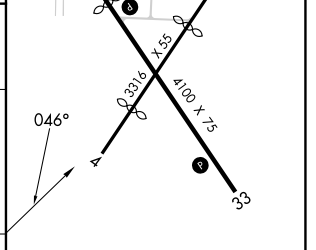
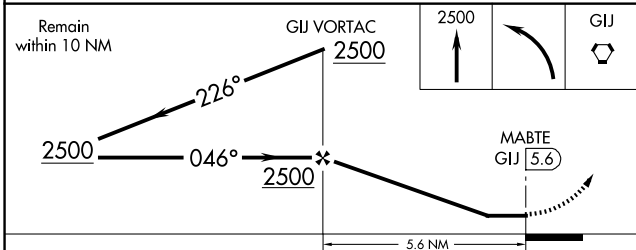
**VOR-A**

JERRY TYLER MEML (3TR)

DME required.		MISSED APPROACH: Climb to 2500 then left turn direct GIJ VORTAC and hold.	
▼	Procedure NA at night. Use SBN altimeter setting; when not received, use EKM altimeter setting and increase all MDAs 20 feet.		
▲ NA	Rwy 4, 15, 22, and 33 helicopter visibility reduction below 1 SM NA.		
SBN ASOS <b>120.675</b>	SOUTH BEND APP CON * <b>118.55 257.8</b>	GCO <b>121.725</b>	UNICOM <b>122.8 (CTAF) 0</b>



ELEV 750	MIRL Rwy 15-33 0	REIL Rwys 15 and 33 0
----------	------------------	-----------------------



CATEGORY	A	B	C	D	FAF to MAP 5.6 NM					
CIRCLING	1300-1	550 (600-1)	1460-2 710 (800-2)	NA	Knots	60	90	120	150	180
					Min:Sec	5:36	3:44	2:48	2:14	1:52

**VOR-A**

EC-1, 16 APR 2026 to 14 MAY 2026

EC-1, 16 APR 2026 to 14 MAY 2026