

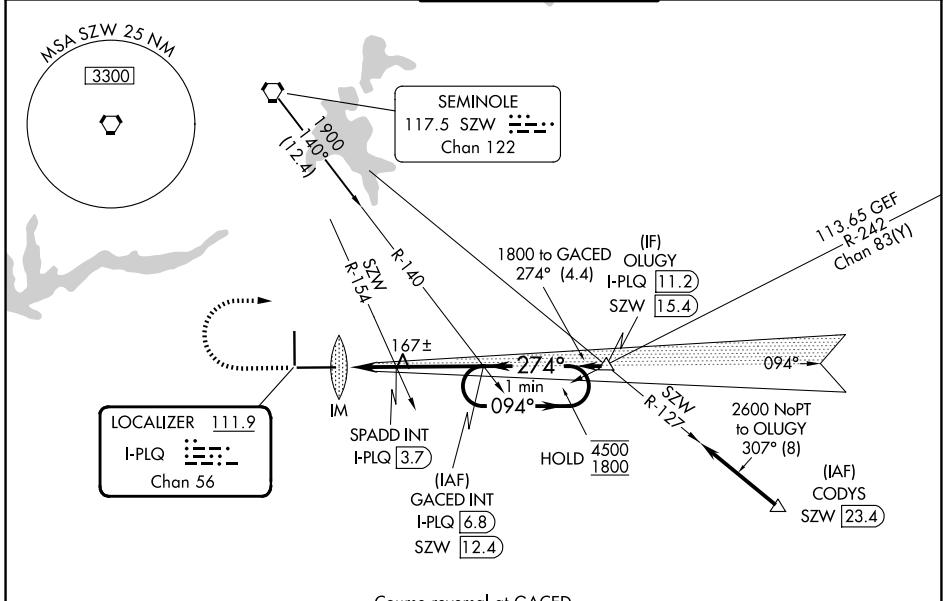
LOC/DME I-PLQ <b>111.9</b> Chan <b>56</b>	APP CRS <b>274°</b>	Rwy Ldg TDZE Apt Elev	<b>8000</b> <b>58</b> <b>83</b>
---	------------------------	-----------------------------	---------------------------------------

# ILS or LOC RWY 27

TALLAHASSEE INTL (TLH)

DME required.	ALSIF-2	MISSED APPROACH: Climb to 2000 then climbing right turn to 4000 on heading 092° and on SZW VORTAC R-140 to GACED INT/SZW 12.4 DME and hold, continue climb-in-hold to 4000.
<p>▲ For inop ALS, increase S-ILS 27 Cat E visibility to RVR 4000 and S-LOC 27 Cat E visibility to 2 SM. ASR</p>		

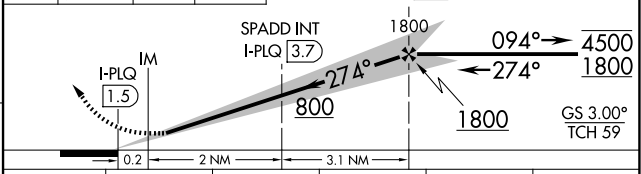
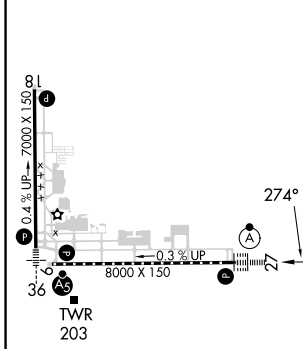
ATIS <b>119.45 239.25</b>	TALLAHASSEE APP CON * <b>135.8 317.4</b>	TALLAHASSEE TOWER * <b>118.7 (CTAF) 257.8</b>	GND CON <b>121.9 348.6</b>	UNICOM <b>123.075</b>
------------------------------	---	--	-------------------------------	--------------------------



Course reversal at GACED  
NA for Cat E aircraft.

Procedure NA for arrivals at CODYS on V7-295 southeast bound.

ELEV 83	TDZE 58
---------	---------



TDZ/CL Rwy 27  
REIL Rws 9 and 18  
HIRL Rws 9-27 and 18-36

FAF to MAP 5.3 NM

Knots	60	90	120	150	180
Min:Sec	5:18	3:32	2:39	2:07	1:46

CATEGORY	A	B	C	D	E
S-ILS 27	258/18		200 (200-½)		
S-LOC 27	740/24	682 (700-½)	740-1½	682 (700-1½)	
CIRCLING	740-1	657 (700-1)	740-2 657 (700-2)	800-2¼ 717 (800-2¼)	1000-3 917 (1000-3)

SE-3, 16 APR 2026 to 14 MAY 2026

SE-3, 16 APR 2026 to 14 MAY 2026