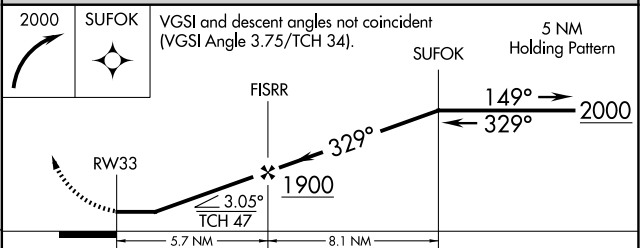
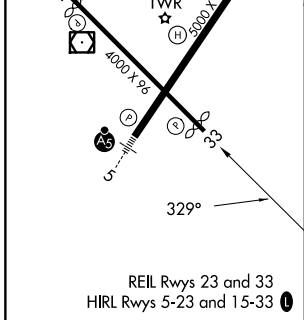
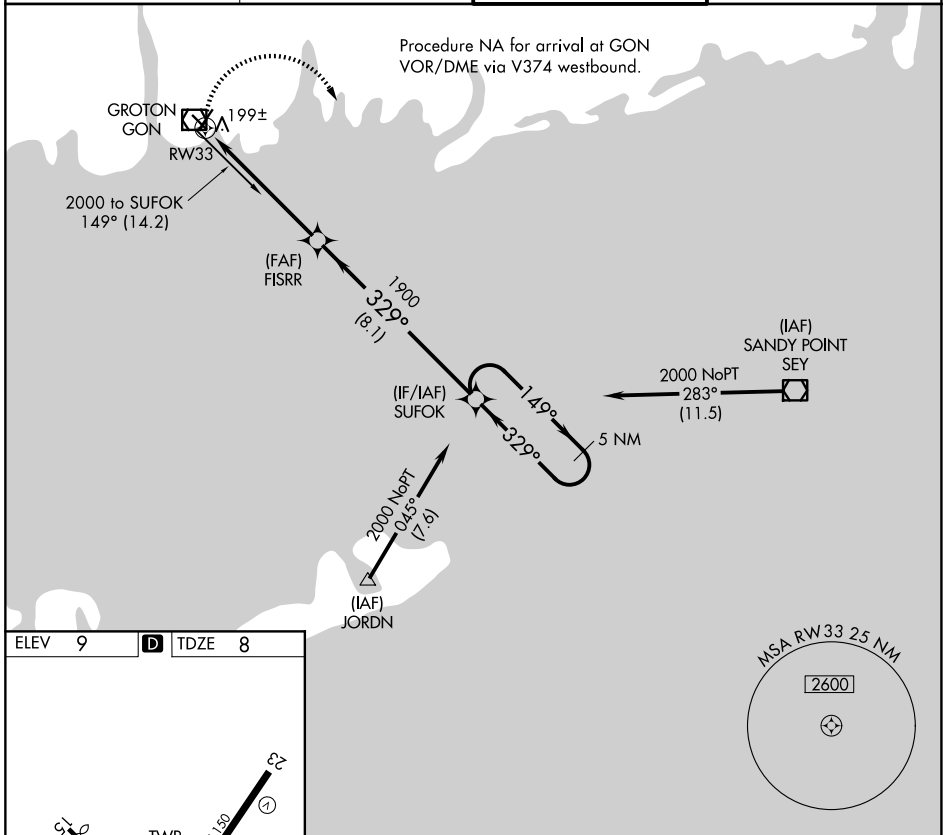


APP CRS	Rwy Ldg	3666
329°	TDZE	8
	Apt Elev	9

RNAV (GPS) RWY 33

GROTON-NEW LONDON (GON)

RNP APCH.		MISSED APPROACH: Climbing right turn to 2000 direct SUFOK and hold.	
▽ Rwy 33 helicopter visibility reduction below ¼ SM NA.			
ATIS 127.0	PROVIDENCE APP CON ★ 125.75 319.2	GROTON TOWER ★ 125.6 (CTAF) 236.775	GND CON 121.65 236.775



CATEGORY	A	B	C	D
LNAV MDA	460-1	452 (500-1)	460-1¼ 452 (500-1¼)	460-1½ 452 (500-1½)

NE-1, 16 APR 2026 to 14 MAY 2026

NE-1, 16 APR 2026 to 14 MAY 2026