

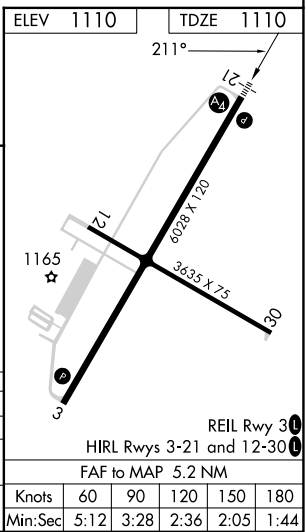
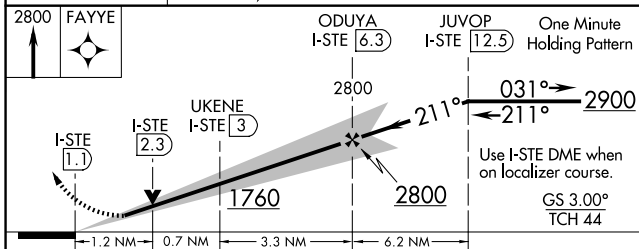
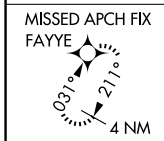
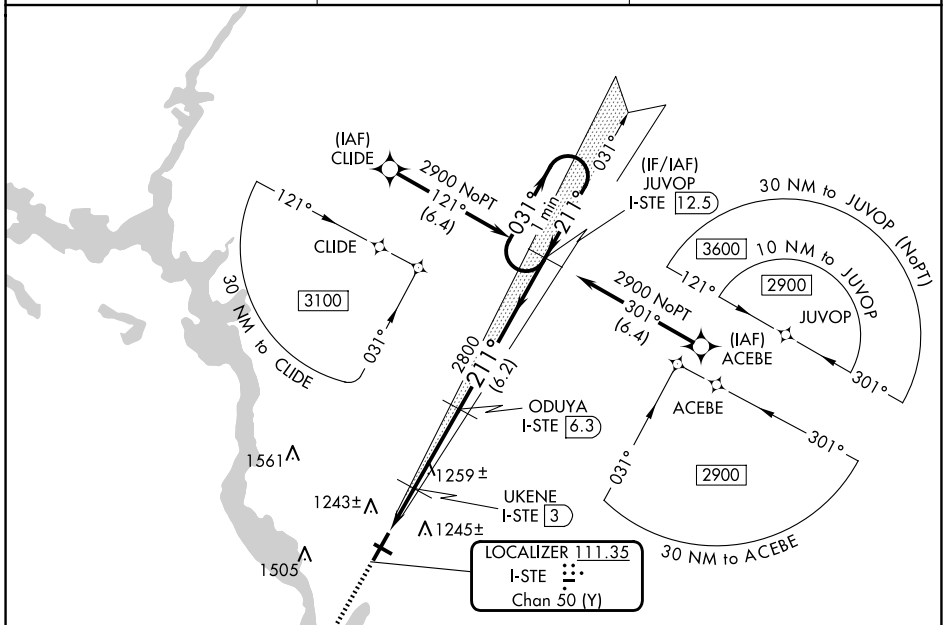
LOC/DME I-STE	APP CRS	Rwy Ldg	<b>6028</b>
<b>111.35</b>	<b>211°</b>	TDZE	<b>1110</b>
Chan <b>50(Y)</b>		Apt Elev	<b>1110</b>

# ILS or LOC RWY 21

STEVENS POINT MUNI (STE)

RNP APCH - GPS.	MALS	MISSED APPROACH: Climb to 2800 direct FAYYE and hold.
DME required.		
For inop ALS, increase S-LOC 21 Cat C/D visibility to 1 1/2 SM. Inop table does not apply to S-ILS 21 all Cats. Autopilot coupled approach NA below 1400.		

AWOS-3 <b>119.275</b>	MINNEAPOLIS CENTER <b>124.4 317.7</b>	UNICOM <b>122.7 (CTAF)</b>
--------------------------	--	-------------------------------



CATEGORY	A	B	C	D
S-ILS 21	1360-3/4 250 (300-3/4)			
S-LOC 21	1520-3/4 410 (500-3/4)		1520-1 410 (500-1)	
CIRCLING	1580-1 470 (500-1)	1600-1 490 (500-1)	1860-2 1/4 750 (800-2 1/4)	1860-2 1/2 750 (800-2 1/2)

REIL Rwy 30					
HIRL Rwy 3-21 and 12-30					
FAF to MAP 5.2 NM					
Knots	60	90	120	150	180
Min:Sec	5:12	3:28	2:36	2:05	1:44

EC-3, 16 APR 2026 to 14 MAY 2026

EC-3, 16 APR 2026 to 14 MAY 2026