

LOC I-PTK <b>111.1</b>	APP CRS <b>095°</b>	Rwy Ldg TDZE Apt Elev	<b>6520</b> <b>981</b> <b>981</b>
---------------------------	------------------------	-----------------------------	---

# ILS or LOC RWY 9R

OAKLAND COUNTY INTL (PTK)

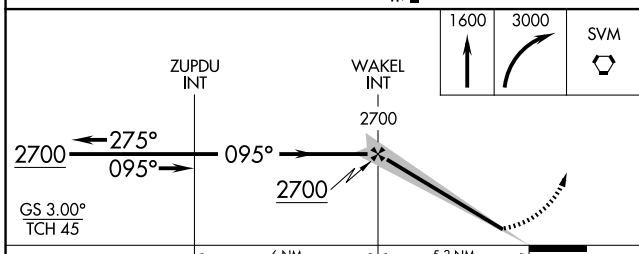
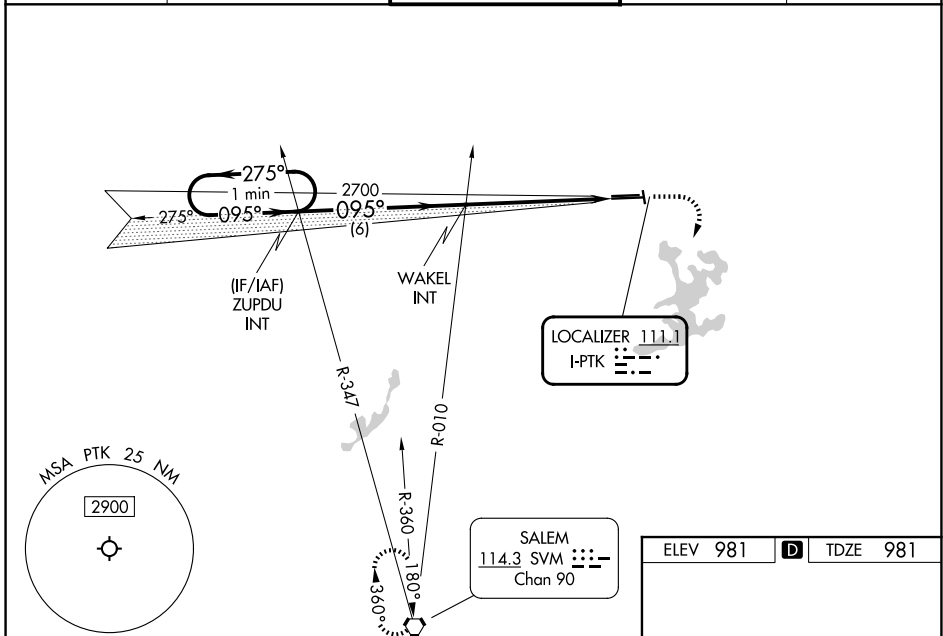
RADAR required for procedure entry.

**▼** Circling Rwy 9L, 36 NA at night. When local altimeter setting not received, use Coleman A Young Muni altimeter setting and increase DA to 1286 feet and all MDA 120 feet, increase S-LOC 9R Cat B visibility to RVR 4000, Cat C/D visibility 3/8 SM, and Circling Cat B/C/D visibility 1/2 SM. For inop MALS, increase S-LOC 9R Cat C/D visibility to 1 3/4 SM. For inop MALS, when using Coleman A Young altimeter, increase S-ILS 9R all Cats visibility to RVR 4500, and increase S-LOC 9R Cat C/D visibility to 2 SM. \*\*RVR 1800 authorized with the use of FD or AP or HUD to DA, NA when using Coleman A Young Muni altimeter setting.

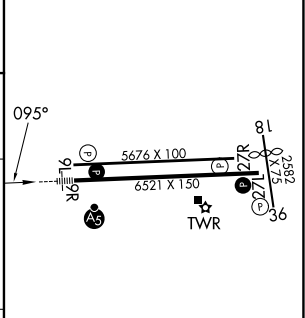
**▲** MISSED APPROACH: Climb to 1600 then climbing right turn to 3000 direct SVM VORTAC and hold.

MALS R

ATIS <b>125.025</b>	DETROIT APP CON <b>132.35 284.0</b>	<b>PONTIAC TOWER ★</b> <b>120.5 (CTAF) 0</b>	GND CON <b>121.9</b>	UNICOM <b>122.95</b>
------------------------	--	---	-------------------------	-------------------------



ELEV 981	<b>D</b> TDZE 981
----------	-------------------



CATEGORY	A	B	C	D
S-ILS 9R	** 1181/24		200 (200-1/2)	
S-LOC 9R	1620/24	639 (700-1/2)	1620-1 3/8	639 (700-1 3/8)
CIRCLING	1620-1	639 (700-1)	1640-1 3/4	1640-2
			659 (700-1 3/4)	659 (700-2)

HIRL Rwy 9R-27L **0**  
MIRL Rwy 9L-27R  
REIL Rwy 27L **0**  
REIL Rwy 9L and 27R

FAF to MAP 5.3 NM

Knots	60	90	120	150	180
Min:Sec	5:18	3:32	2:39	2:07	1:46

EC-1, 16 APR 2026 to 14 MAY 2026

EC-1, 16 APR 2026 to 14 MAY 2026