

LOC I-PTK <b>111.1</b>	APP CRS <b>275°</b>	Rwy Ldg <b>6520</b>
		TDZE <b>974</b>
		Apt Elev <b>981</b>

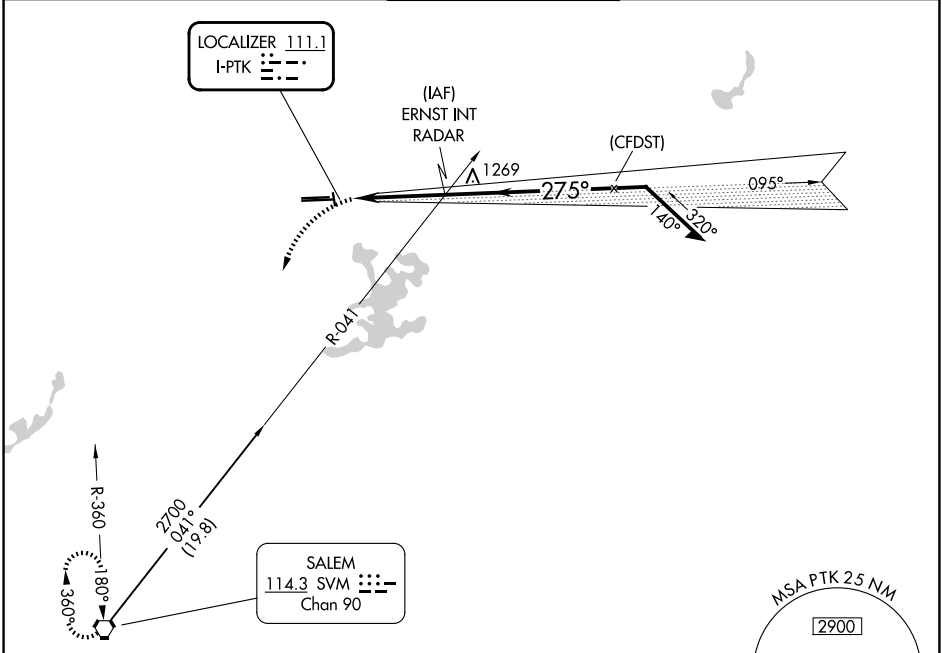
# LOC BC RWY 27L

OAKLAND COUNTY INTL (PTK)

**⚠** Circling Rwy 9L, 36 NA at night. When local altimeter setting not received, use DET altimeter setting and increase all MDAs 120 feet, increase S-LOC BC 27L visibility Cats C and D ¾ SM, and Circling visibility Cats C and D ½ SM.

**MISSED APPROACH:**  
Climbing left turn to 3000 direct SVM VORTAC and hold.

ATIS <b>125.025</b>	DETROIT APP CON <b>132.35 284.0</b>	PONTIAC TOWER ★ <b>120.5 (CTAF) 0</b>	GND CON <b>121.9</b>	UNICOM <b>122.95</b>
------------------------	--	--	-------------------------	-------------------------



ELEV 981	<b>D</b>	TDZE 974
----------	----------	----------

**BACK COURSE**

3000 SVM Disregard GS indications. Remain within 10 NM

ERNST INT RADAR

095° 2500

275° 2300

≤ 3.00° TCH 42

0.8 3.3 NM

CATEGORY	A	B	C	D
S-LOC 27L	1440-1	466 (500-1)	1440-1¾	466 (500-1¾)
CIRCLING	1500-1 519 (600-1)	1540-1 559 (600-1)	1640-1¾ 659 (700-1¾)	1640-2 659 (700-2)

HIRL Rwy 9R-27L  
MIRL Rwy 9L-27R  
REIL Rwy 27L  
REIL Rwys 9L and 27R  
FAF to MAP 3.3 NM

Knots	60	90	120	150	180
Min:Sec	3:18	2:12	1:39	1:19	1:06

EC-1, 16 APR 2026 to 14 MAY 2026

EC-1, 16 APR 2026 to 14 MAY 2026