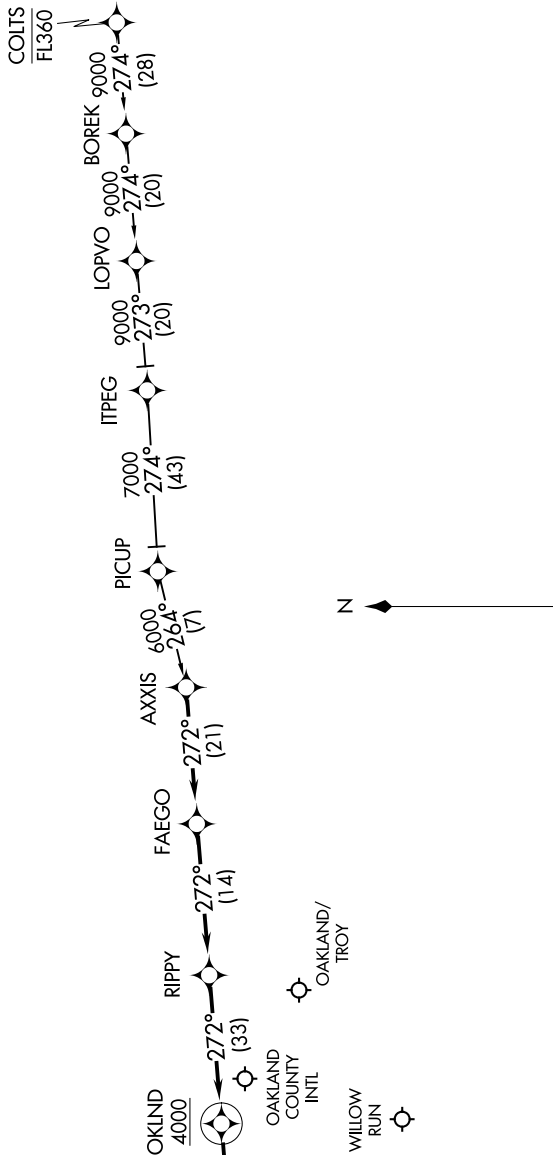
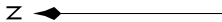


ARB ATIS  
134.55  
PTK ATIS  
125.025  
YIP ATIS  
127.425  
DETROIT APP CON  
132.35 284.0

Ldg all Airports

○ LIVINGSTON COUNTY / SPENCER J HARDY  
○ OAKLAND COUNTY INTL  
○ WILLOW RUN  
○ ANN ARBOR MUNI

○ OAKLAND / TROY



NOTE: RADAR required.  
NOTE: RNAV 1.  
NOTE: DME/DME/IRU or GPS required.

ARRIVAL ROUTE DESCRIPTION

COLTS TRANSITION (COLTS.OKLND1):  
PICUP TRANSITION (PICUP.OKLND1):

LANDING ALL AIRPORTS: From AXXIS on track 272° to FAEGO, then on track 272° to RIPPY, then on track 272° to cross OKLND at or above 4000, then on track 272°. Expect RADAR vectors to final approach course.

NOTE: Chart not to scale.