

EC-1, 16 APR 2026 to 14 MAY 2026

DEPARTURE ROUTE DESCRIPTION

TAKEOFF RUNWAYS 9L/R: Climb on heading 095° or as assigned by ATC, thence....
TAKEOFF RUNWAYS 27L/R: Climb on heading 275° or as assigned by ATC, thence....

....for RADAR vectors to JWELS, then on track 218° to SNDRS, then on (transition). Maintain ATC assigned altitude, expect filed altitude 10 minutes after departure.

BGHRT TRANSITION (SNDRS3.BGHRT):
TORRR TRANSITION (SNDRS3.TORRR):

TOP ALTITUDE:
ASSIGNED BY ATC

RNAV-1 DME/DME/IRU or GPS.
RADAR required.

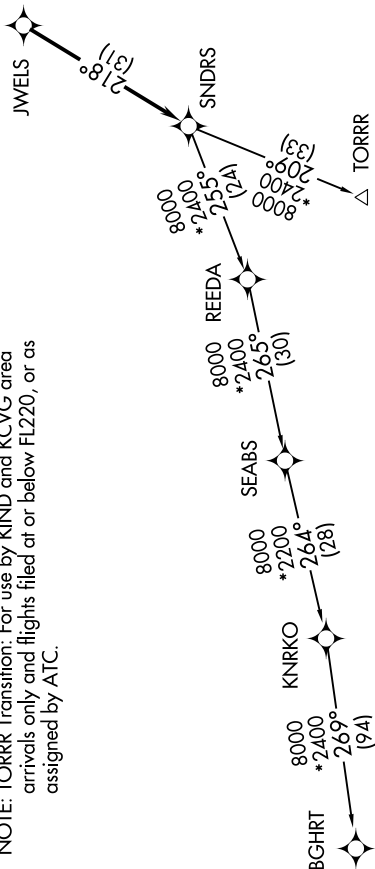
DETROIT DEP CON
132.35 284.0
ATIS
125.025
CLNC DEL
118.25
GND CON
121.9
PONTIAC TOWER*
120.5 (CTAF)

N



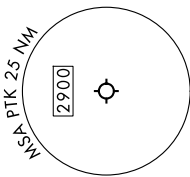
NOTE: Turbojet departures at/above 10000, maintain 280K until advised by ATC.

NOTE: TORRR Transition: For use by KIND and KCVG area arrivals only and flights filed at or below FL220, or as assigned by ATC.



TAKEOFF MINIMUMS:

Rwys 18, 36: NA - Environmental.
Rwys 9L/R, 27L/R: Standard.



NOTE: Chart not to scale.

EC-1, 16 APR 2026 to 14 MAY 2026