

(ZETTR4.ZETTR) 24137

# ZETTR FOUR DEPARTURE (RNAV)

AL-5052 (FAA)

OAKLAND COUNTY INTL (PTK)

PONTIAC, MICHIGAN

DETROIT DEP CON  
132.35 284.0  
ATIS  
125.025  
CLNC DEL  
118.25  
GND CON  
121.9  
PONTIAC TOWER ★  
120.5 (CTAF)

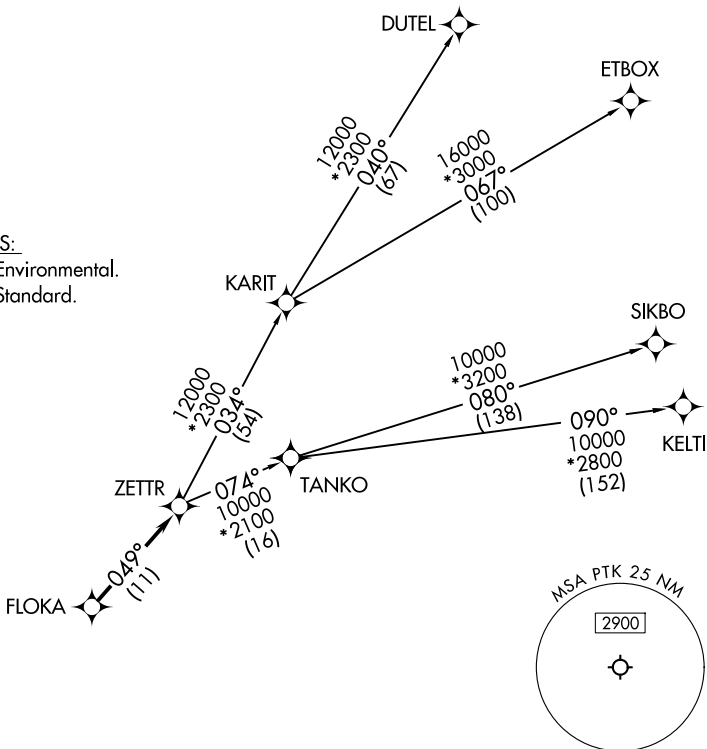
RNAV 1 - DME/DME/IRU or GPS.

RADAR required.

**TOP ALTITUDE:  
ASSIGNED BY ATC**

TAKEOFF MINIMUMS:

Rwys 18, 36: NA - Environmental.  
Rwys 9L/R, 27L/R: Standard.



EC-1, 16 APR 2026 to 14 MAY 2026

EC-1, 16 APR 2026 to 14 MAY 2026



NOTE: Turbojet departures at/above 10000, maintain 280K until advised by ATC.  
NOTE: TANKO Transition: For use by CYYZ area arrivals only, or as assigned by ATC.

NOTE: Chart not to scale.

### DEPARTURE ROUTE DESCRIPTION

**TAKEOFF RUNWAYS 9L/R:** Climb on heading 095° or as assigned by ATC, thence....  
**TAKEOFF RUNWAYS 27L/R:** Climb on heading 275° or as assigned by ATC, thence....

....for RADAR vectors to FLOKA, then on track 049° to ZETTR, then on (transition). Maintain ATC assigned altitude, expect filed altitude 10 minutes after departure.

- DUTEL TRANSITION (ZETTR4.DUTEL):**
- ETBOX TRANSITION (ZETTR4.ETBOX):**
- KELTI TRANSITION (ZETTR4.KELTI):**
- SIKBO TRANSITION (ZETTR4.SIKBO):**
- TANKO TRANSITION (ZETTR4.TANKO):**

ZETTR FOUR DEPARTURE (RNAV)  
(ZETTR4.ZETTR) 16MAY24

PONTIAC, MICHIGAN  
OAKLAND COUNTY INTL (PTK)