

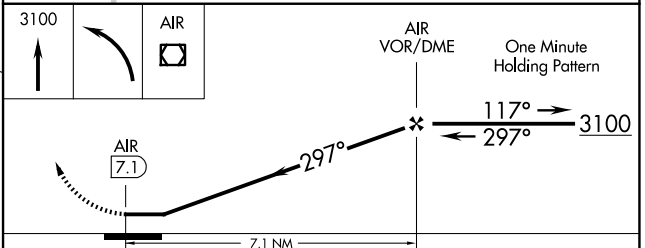
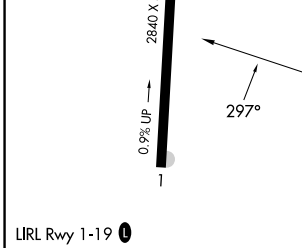
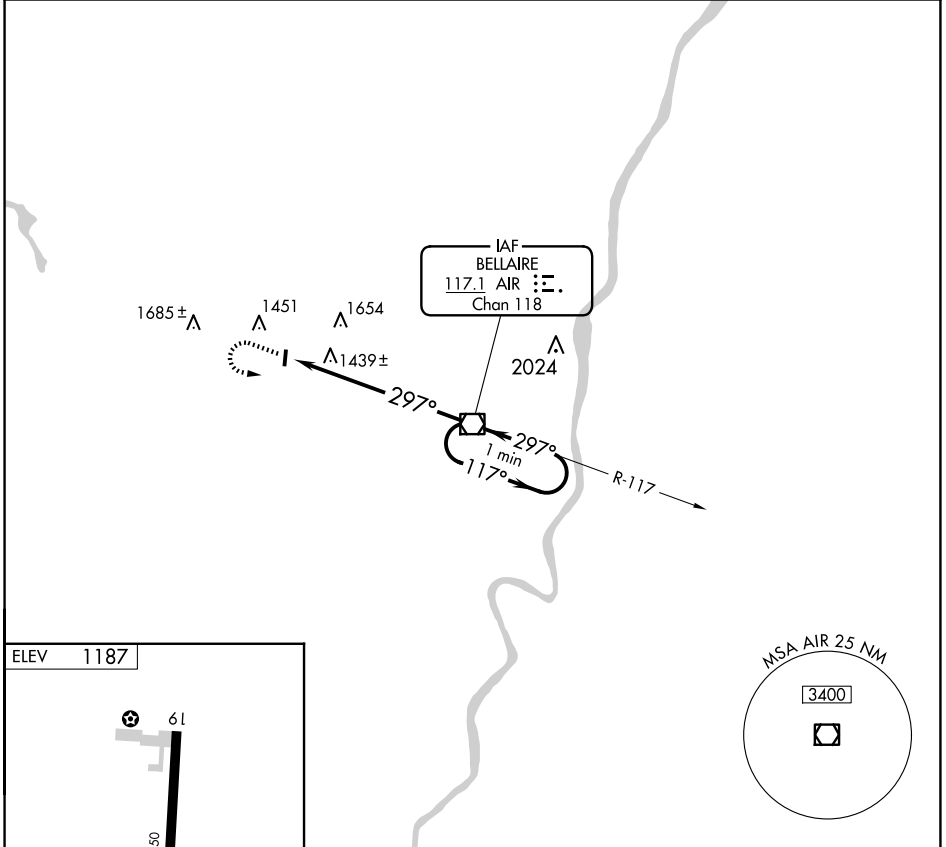
VOR/DME AIR 117.1 Chan 118	APP CRS 297°	Rwy Idg TDZE Apt Elev 1187	N/A N/A
------------------------------------------------	------------------------	-----------------------------------------	--------------------------

VOR-A
ALDERMAN (2P7)

NA Use Wheeling Ohio County altimeter setting; when not received, use Pittsburgh Intl altimeter setting and increase all MDAs 80 feet and Circling Cat A visibility ¼ SM. Procedure NA at night. Helicopter visibility reduction below 1 SM NA.

MISSED APPROACH: Climb to 3100 then left turn direct AIR VOR/DME and hold.

HLG ASOS 127.375	CLEVELAND CENTER 126.95 239.30	CTAF 122.9	123.3 0
----------------------------	------------------------------------------	----------------------	----------------



FAF to MAP 7.1 NM					
Knots	60	90	120	150	180
Min:Sec	7:06	4:44	3:33	2:50	2:22
CATEGORY	A		B		C D
CIRCLING	1920-1 733 (800-1)		2000-1¼ 813 (900-1¼)		NA

EC-2, 16 APR 2026 to 14 MAY 2026

EC-2, 16 APR 2026 to 14 MAY 2026