

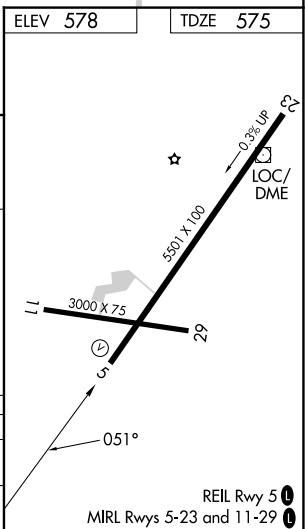
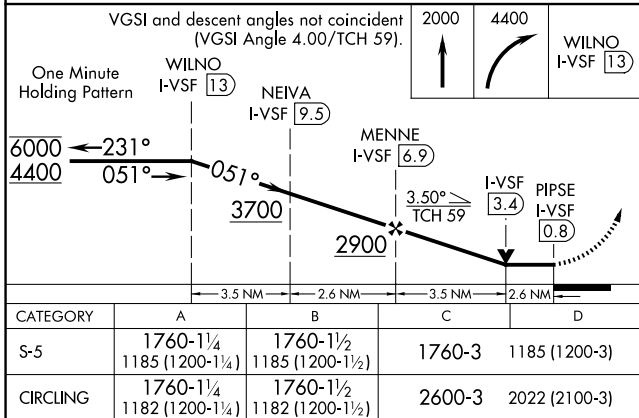
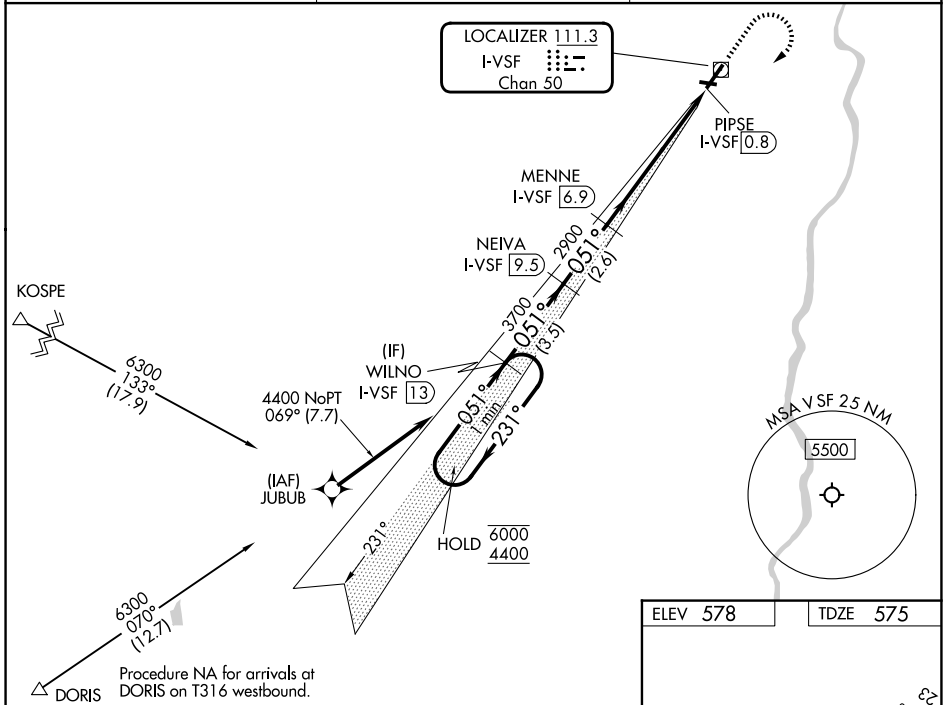
LOC/DME I-VSF <b>111.3</b> Chan <b>50</b>	APP CRS <b>051°</b>	Rwy Ldg TDZE Apt Elev	<b>5501</b> <b>575</b> <b>578</b>
---	------------------------	-----------------------------	---

# LOC RWY 5

HARTNESS STATE (SPRINGFIELD) (V5F)

RNP APCH - GPS. DME required.	MISSED APPROACH: Climb to 2000 then climbing right turn to 4400 direct WILNO/13 DME and hold.
<p>▼ Rwy 5 helicopter visibility reduction below 3/4 SM NA. When local altimeter setting not received, use LEB altimeter setting and increase all MDAs 60 feet.</p> <p>⚠ NA VDP NA when using LEB altimeter setting. Circling Rwy 11, 23, 29 NA at night.</p>	

ASOS <b>121.425</b>	BOSTON CENTER <b>134.7 269.475</b>	UNICOM <b>122.8 (CTAF)</b>
------------------------	---------------------------------------	-------------------------------



NE-1, 16 APR 2026 to 14 MAY 2026

NE-1, 16 APR 2026 to 14 MAY 2026