


LOC/DME I-BMI <b>110.95</b> Chan <b>46 (Y)</b>	APP CRS <b>291°</b>	Rwy Ldg TDZE Apt Elev	<b>6525</b> <b>871</b> <b>871</b>
--	------------------------	-----------------------------	---

# ILS or LOC RWY 29

CENTRAL IL RGNL/BLOOMINGTON-NORMAL (BMI)

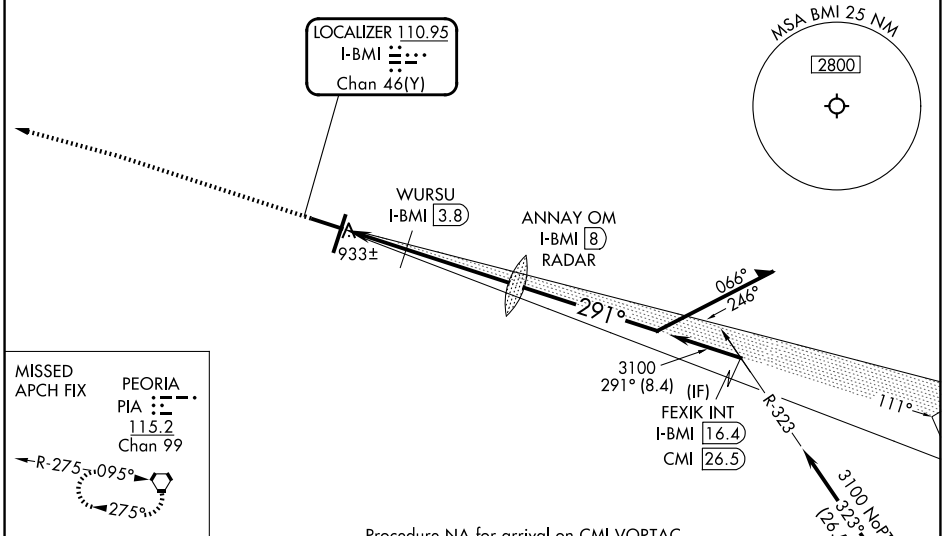
DME required. RADAR required for procedure entry at ANNAY OM.

**⚠** VDP NA when using PIA altimeter setting. For inop ALS, increase S-LOC 29 Cats C and D visibility to RVR 5500. When local altimeter setting not received, use PIA altimeter setting; increase S-ILS 29 DA to 1187 feet; increase all MDAs 120 feet and S-LOC 29 visibility Cats C and D to RVR 5000 and Circling visibility Cats C and D ½ SM. For inop ALS when using PIA altimeter setting: increase S-ILS 29 visibility all Cats to RVR 4500 and S-LOC 29 visibility Cats C and D to 1 ½ SM. \* RVR 1800 authorized with use of FD or AP or HUD to DA (NA when using PIA altimeter setting).

MALSR 

MISSED APPROACH: Climb to 1500 then climbing left turn to 3000 direct PIA VORTAC and hold.

ATIS <b>119.575</b>	SAINT LOUIS APP CON <b>128.725 256.9</b>	BLOOMINGTON TOWER * <b>124.6 (CTAF) 0 269.575</b>	GND CON <b>121.65</b>	UNICOM <b>122.95</b>
------------------------	---	--	--------------------------	-------------------------



MISSED APCH FIX

PEORIA PIA Chan 99  
115.2

R-275-095°

275°




ELEV 871 **D** TDZE 871

TDZ/CL Rwy 20 **1**  
HIRL Rws 2-20 and 11-29 **1**  
FAF to MAP 6.6 NM

Knots	60	90	120	150	180
Min:Sec	6:36	4:24	3:18	2:38	2:12

Procedure NA for arrival on CMI VORTAC airway radials 234 CW 006.

IAF CHAMPAIGN 115.75 CMI Chan 104(Y)

1500	3000	PIA	ANNAY OM I-BMI 8 RADAR	Remain within 10 NM
				
			WURSU I-BMI 3.8	111°
			I-BMI 2.4	3100
			I-BMI 1.4	291°
			1700	3100
			0.9 1.5 4.1 NM	GS 3.00° TCH 56

CATEGORY	A	B	C	D
S-ILS 29 *	1071/24 200 (200-½)			
S-LOC 29	1240/24	369 (400-½)	1240/35	369 (400-⅝)
CIRCLING	1340-1	469 (500-1)	1620-2¼ 749 (800-2¼)	1620-2½ 749 (800-2½)

# ILS or LOC RWY 29

EC-3, 16 APR 2026 to 14 MAY 2026

EC-3, 16 APR 2026 to 14 MAY 2026