

LOC/DME I-BMI <b>110.95</b> Chan <b>46 (Y)</b>	APP CRS <b>111°</b>	Rwy Ldg TDZE <b>871</b> Apt Elev <b>871</b>
--	------------------------	---

# LOC BC RWY 11

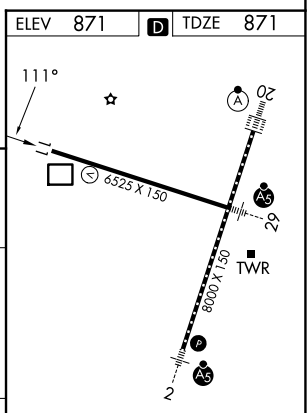
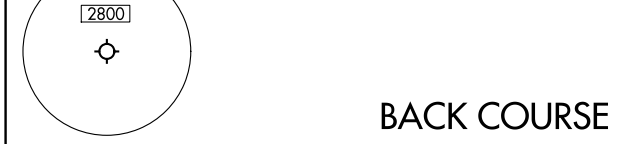
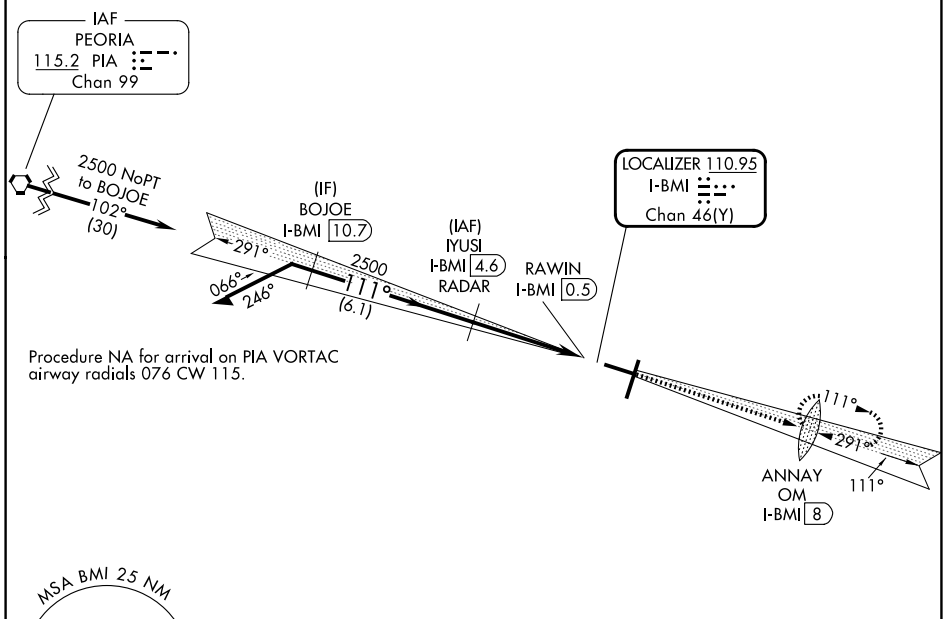
CENTRAL IL RGNL/BLOOMINGTON-NORMAL (BMI)

DME required. RADAR required for procedure entry at IYUSI.

When local altimeter setting not received, use PIA altimeter setting; increase all MDAs 120 feet and S-LOC BC 11 visibility Cats C and D 3/4 SM, and Circling visibility Cats C and D 1/4 SM.

MISSED APPROACH: Climb to 3100 on I-BMI localizer SE course 111° to ANNAY OM/I-BMI 8 DME and hold, continue climb-in-hold to 3100.

ATIS <b>119.575</b>	SAINT LOUIS APP CON <b>128.725 256.9</b>	BLOOMINGTON TOWER * <b>124.6 (CTAF) 269.575</b>	GND CON <b>121.65</b>	UNICOM <b>122.95</b>
------------------------	---	--	--------------------------	-------------------------



	IYUSI I-BMI 4.6 RADAR	3100 I-BMI SE crs 111°	ANNAY OM
	BOJOIE INT I-BMI 10.7	Disregard GS indications.	
	2500	3.00° TCH 43	RAWIN I-BMI 0.5

CATEGORY	A	B	C	D
S-LOC 11	1280-1	409 (500-1)	1280-1 1/8	409 (500-1 1/8)
CIRCLING	1340-1	469 (500-1)	1620-2 1/4 749 (800-2 1/4)	1620-2 1/2 749 (800-2 1/2)

TDZ/CL Rwy 20  
HIRL Rws 2-20 and 11-29

# LOC BC RWY 11

EC-3, 16 APR 2026 to 14 MAY 2026

EC-3, 16 APR 2026 to 14 MAY 2026