

|  |                        |                             |   |
|--|------------------------|-----------------------------|---|
| WAAS<br>CH <b>99303</b><br><b>W20A</b> | APP CRS<br><b>201°</b> | Rwy Ldg<br>TDZE<br>Apt Elev | <b>8000</b><br><b>871</b><br><b>871</b> |
|--|------------------------|-----------------------------|---|

# RNAV (GPS) RWY 20

CENTRAL IL RGNL/BLOOMINGTON-NORMAL (BMI)

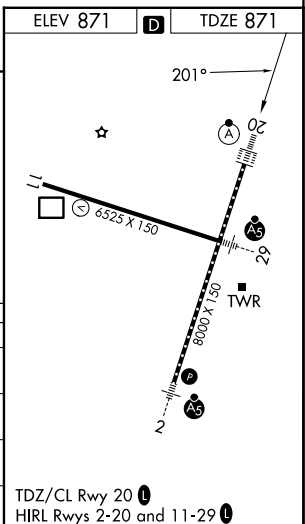
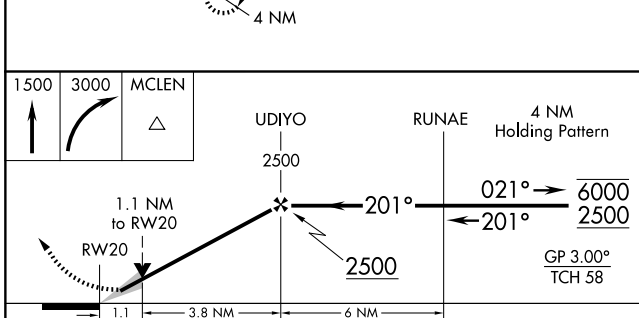
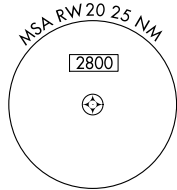
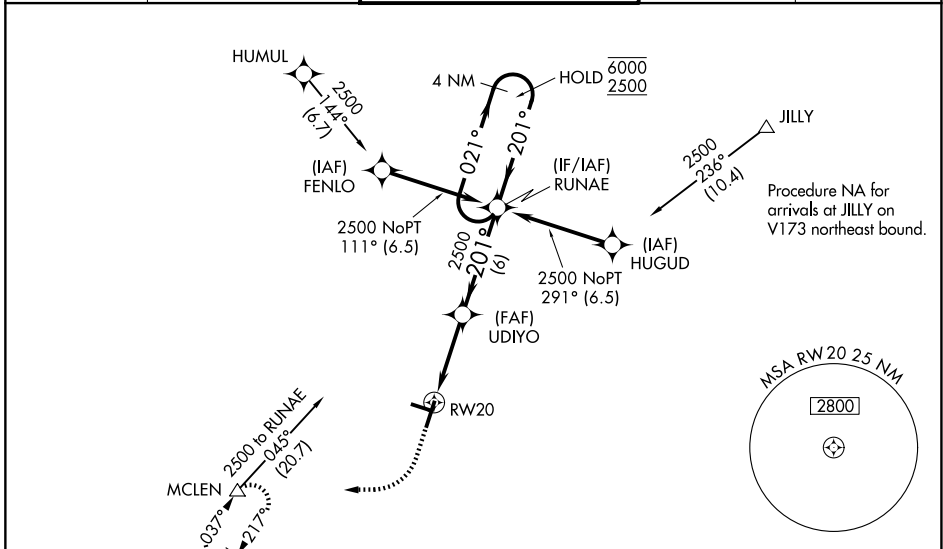
RNP APCH - GPS.

⚠ For uncompensated Baro-VNAV systems, LNAV/VNAV NA below -20°C or above 54°C. Baro-VNAV and VDP NA when using PIA altimeter setting. When local altimeter setting not received, use PIA altimeter setting: increase LPV DA to 1187 feet and all visibilities to RVR 2400; increase LNAV/VNAV DA to 1417 feet and all visibilities to RVR 6000; increase all MDAs 120 feet and LNAV visibility Cat C and D to RVR 5500 and Circling visibility Cat C and D ¼ SM. For inop ALS, increase LNAV Cat C and D visibility to RVR 6000. For inop ALS when using PIA altimeter setting, increase LPV all Cats visibility to RVR 4500.

ALS F-2

MISSED APPROACH: Climb to 1500 then climbing right turn to 3000 direct MCLEN and hold.

|                        |   |   |                          |                         |
|------------------------|---|---|--------------------------|-------------------------|
| ATIS<br><b>119,575</b> | SAINT LOUIS APP CON<br><b>128,725 256,9</b> | BLOOMINGTON TOWER ★<br><b>124,6(CTAF) 269,575</b> | GND CON<br><b>121,65</b> | UNICOM<br><b>122,95</b> |
|------------------------|---|---|--------------------------|-------------------------|



| CATEGORY     | A       | B           | C                       | D                       |
|--------------|---------|-------------|-------------------------|-------------------------|
| LPV DA       |         | 1071/18     | 200 (200-½)             |                         |
| LNAV/VNAV DA |         | 1301/40     | 430 (500-¾)             |                         |
| LNAV MDA     | 1280/24 | 409 (500-½) | 1280/40                 | 409 (500-¾)             |
| CIRCLING     | 1340-1  | 469 (500-1) | 1620-2¼<br>749 (800-2¼) | 1620-2½<br>749 (800-2½) |

EC-3, 16 APR 2026 to 14 MAY 2026

EC-3, 16 APR 2026 to 14 MAY 2026