

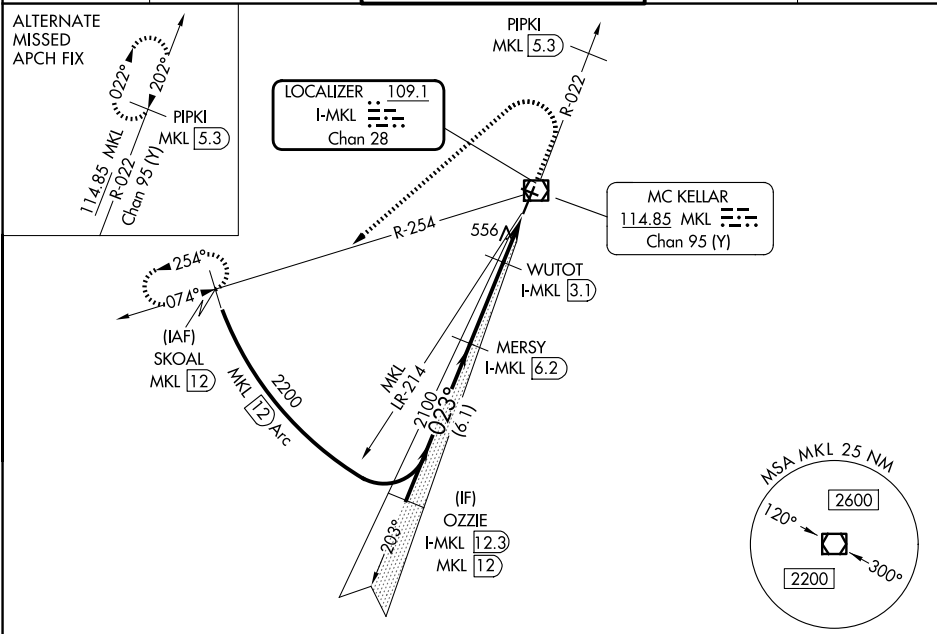
LOC/DME I-MKL <b>109.1</b> Chan 28	APP CRS <b>023°</b>	Rwy Ldg TDZE <b>433</b> Apt Elev <b>433</b>
--	------------------------	---

# ILS or LOC RWY 2

JACKSON RGNL (MKL)

DME required. RADAR required for procedure entry.		MALS R	MISSED APPROACH: Climb to 1000 then climbing left turn to 2200 on heading 230° and MKL VOR/DME R-254 to SKOAL/MKL 12 DME and hold.
<p><b>▼</b> Rwy 2 helicopter visibility reduction below 3/4 SM NA. For inop ALS, increase S-LOC 2 Cat A/B visibility to 1 SM and Cat C/D visibility 1 1/2 SM.</p> <p><b>▲</b></p>			

ASOS <b>119.325</b>	MEMPHIS CENTER <b>134.65 316.15</b>	JACKSON TOWER ★ <b>127.15 (CTAF) 0 249.95</b>	GND CON <b>120.9</b>	UNICOM <b>122.95</b>
------------------------	--	--	-------------------------	-------------------------



SE-1, 16 APR 2026 to 14 MAY 2026

SE-1, 16 APR 2026 to 14 MAY 2026

