

WAAS CH <b>40312</b> <b>W20A</b>	APP CRS <b>203°</b>	Rwy Ldg TDZE <b>418</b> Apt Elev <b>433</b>
--	------------------------	---

# RNAV (GPS) RWY 20

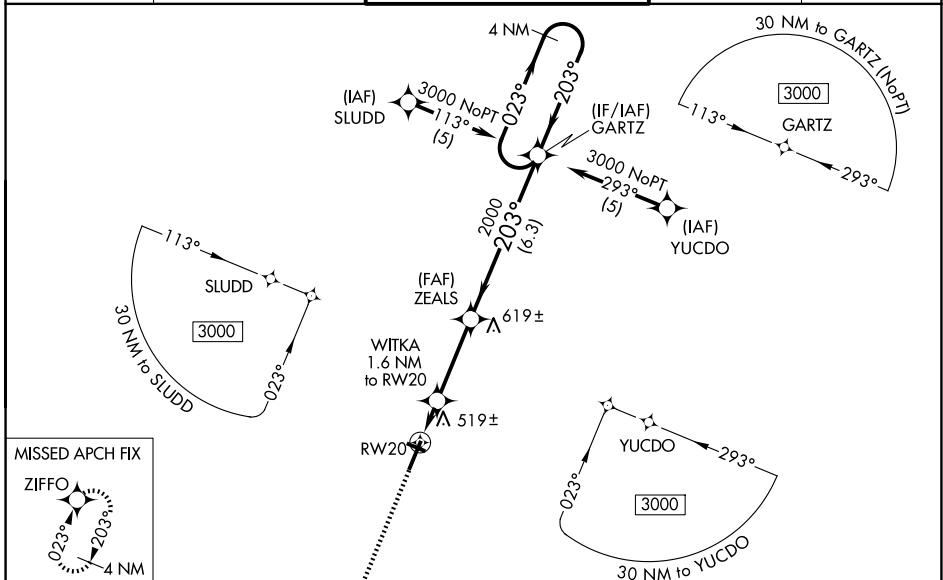
JACKSON RGNL (MKL)

RNP APCH - GPS

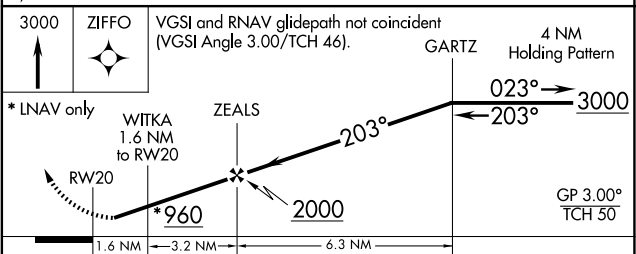
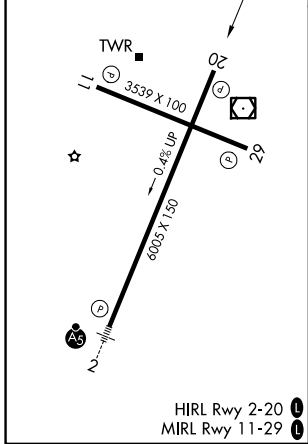
▼ Rwy 20 helicopter visibility reduction below 3/4 SM NA. For uncompensated Baro-VNAV systems, LNAV/VNAV NA below -15°C or above 48°C. Baro-VNAV NA when using Dyersburg altimeter setting. When local altimeter setting not received, use Dyersburg altimeter setting: increase LPV DA to 802 feet and visibility all Cats 1/2 SM; increase LNAV/VNAV DA to 910 feet and visibility all Cats 1/4 SM; increase all MDA 100 feet and visibility LNAV Cat C and D and Circling Cat C 1/2 SM, and Circling Cat D 1/2 SM.

MISSED APPROACH:  
Climb to 3000 direct  
ZIFFO and hold.

ASOS <b>119.325</b>	MEMPHIS CENTER <b>134.65 316.15</b>	JACKSON TOWER ★ <b>127.15</b> (CTAF) <b>249.95</b>	GND CON <b>120.9</b>	UNICOM <b>122.95</b>
------------------------	--	---	-------------------------	-------------------------



ELEV <b>433</b>	TDZE <b>418</b>
-----------------	-----------------



CATEGORY	A	B	C	D
LPV DA		710-1	292 (300-1)	
LNAV/VNAV DA		818-1½	400 (400-1½)	
LNAV MDA		780-1	362 (400-1)	780-1¼ 362 (400-1¼)
CIRCLING	900-1 467 (500-1)	920-1 487 (500-1)	960-1½ 527 (600-1½)	1100-2 667 (700-2)

SE-1, 16 APR 2026 to 14 MAY 2026

SE-1, 16 APR 2026 to 14 MAY 2026