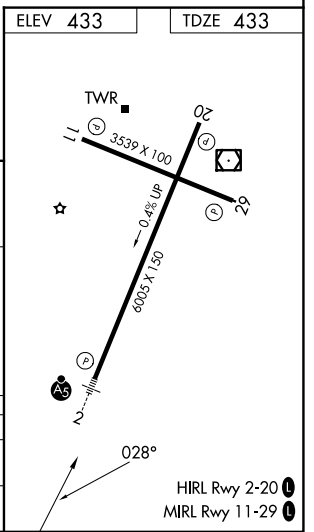
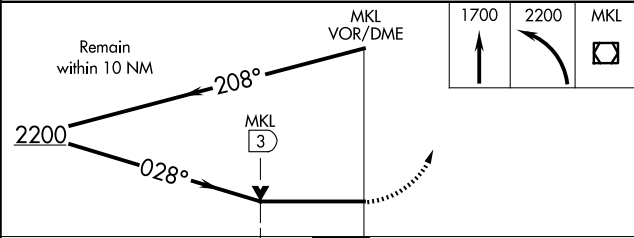
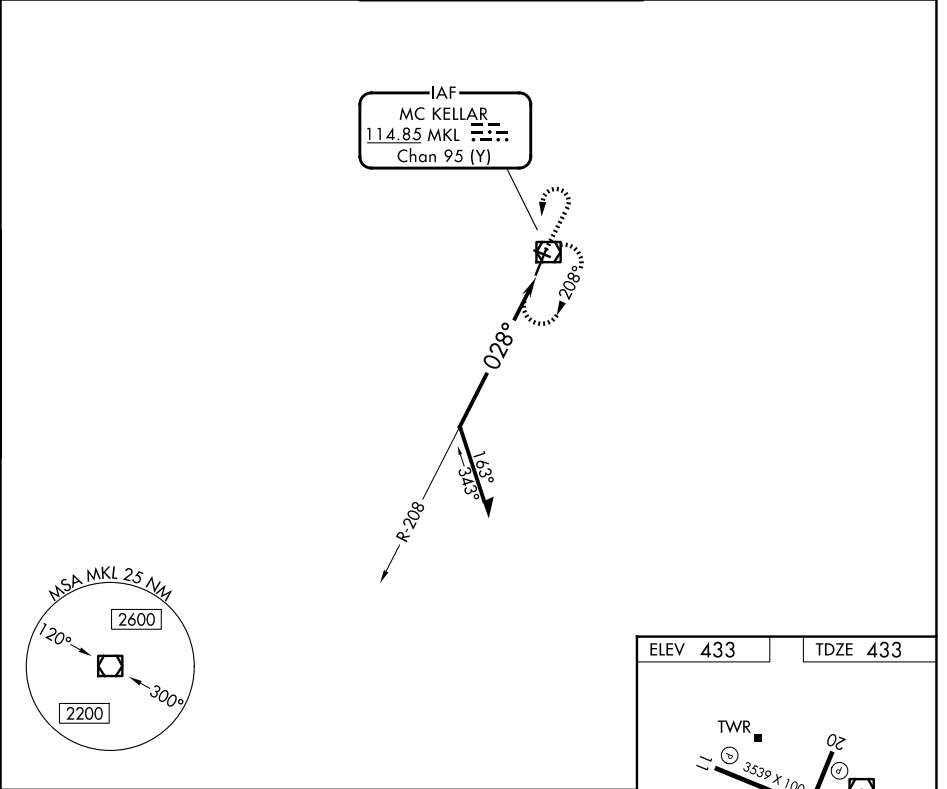


VOR/DME MKL <b>114.85</b> Chan <b>95 (Y)</b>	APP CRS <b>028°</b>	Rwy Ldg <b>6005</b> TDZE <b>433</b> Apt Elev <b>433</b>
--	------------------------	---

# VOR RWY 2

JACKSON RGNL (MKL)

<p>Rwy 2 helicopter visibility reduction below 3/4 SM NA. For inop ALS, increase S-2 Cat A/B visibility to 1 SM.</p>	<p>MALSR</p>	<p>MISSED APPROACH: Climb to 1700 then climbing left turn to 2200 direct MKL VOR/DME and hold, continue climb-in-hold to 2200.</p>		
		ASOS <b>119.325</b>	MEMPHIS CENTER <b>134.65 316.15</b>	JACKSON TOWER ★ <b>127.15 (CTAF) 249.95</b>



CATEGORY	A	B	C	D
S-2	1120-3/4	687 (700-3/4)	1120-1 1/2	687 (700-1 1/2)
CIRCLING	1120-1	687 (700-1)	1120-2	1120-2 1/4 687 (700-2 1/4)

SE-1, 16 APR 2026 to 14 MAY 2026

SE-1, 16 APR 2026 to 14 MAY 2026