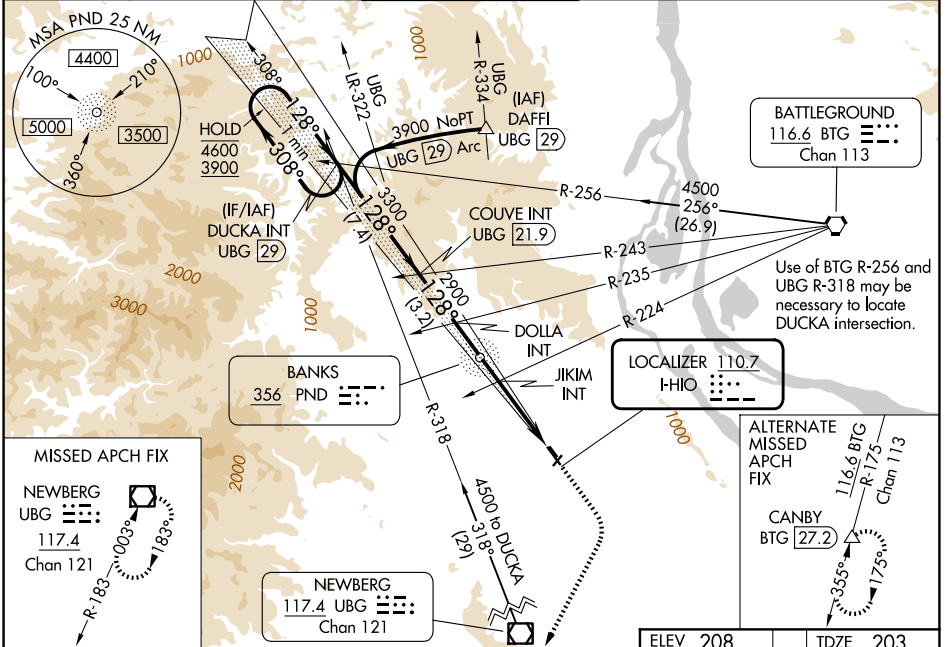


LOC I-HIO 110.7	APP CRS 128°	Rwy Ldg TDZE Apt Elev	6600 203 208
---------------------------	------------------------	-----------------------------	---

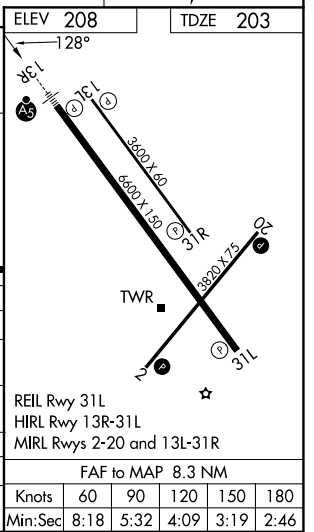
ILS or LOC RWY 13R

PORTLAND-HILLSBORO (HIO)

<p>⚠ Circling to Rwy 13L, 31R NA at night. Inop table does not apply to S-LOC Rwy 13R all Cats. For inop ALS, increase JIKIM fix minimums Cat C/D visibility to 1 3/8 SM.</p>	<p>MALSR</p>		<p>MISSED APPROACH: Climb to 1000 then climbing right turn to 3000 direct UBG VOR/DME and hold. Continue climb-in-hold to 3000.</p>	
	<p>ATIS 127.65</p>	<p>PORTLAND APP CON 126.0 269.175</p>	<p>HILLSBORO TOWER * 119.3 (CTAF) 239.3</p>	<p>GND CON 121.7</p>



CATEGORY	A	B	C	D
S-ILS 13R	403/24 200 (200-1/2)			
S-LOC 13R	1660/60 1457 (1500-1 1/4)	1660-1 1/2 1457 (1500-1 1/2)	1660-3	1457 (1500-3)
CIRCLING	1660-1 1/4 1452 (1500-1 1/4)	1660-1 1/2 1452 (1500-1 1/2)	1660-3	1452 (1500-3)
JIKIM FIX MINIMUMS (DUAL VOR RECEIVERS REQUIRED)				
S-LOC 13R	680/24	477 (500-1/2)	680/50	477 (500-1)
CIRCLING	680-1 472 (500-1)	720-1 512 (600-1)	720-1 1/2 512 (600-1 1/2)	980-2 1/2 772 (800-2 1/2)



NW-1, 16 APR 2026 to 14 MAY 2026