

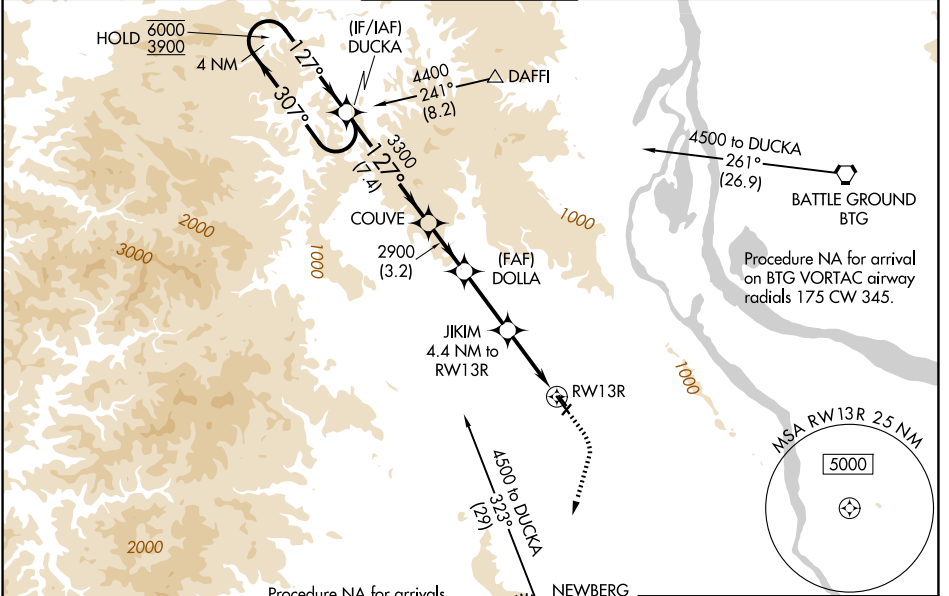
| | | |
|--|------------------------|------------------------|
| WAAS CH 69502 W13A | APP CRS 127° | Rwy Ldg 6600 |
| | | TDZE 203 |
| | | Apt Elev 208 |

RNAV (GPS) RWY 13R

PORTLAND-HILLSBORO (HIO)

| | | |
|--|-------|--|
| RNP APCH. | MALSR | MISSED APPROACH: Climb to 1000 then climbing right turn to 3000 direct UBG VOR/DME and hold. Continue climb-in-hold to 3000. |
| <p>⚠ Circling to Rwy 13L-31R NA at night. For uncompensated Baro-VNAV systems, LNAV/VNAV NA below -18°C or above 54°C. For inop ALS, increase LNAV Cat A/B visibility to RVR 5500 and Cat C/D to 1 3/8 SM. #RVR 1800 authorized with use of FD or AP or HUD to DA.</p> | | |

| | | | | |
|-----------------------|--|--|-------------------------|-------------------------|
| ATIS 127.65 | PORTLAND APP CON 126.0 269.175 | HILLSBORO TOWER ★ 119.3 (CTAF) 239.3 | GND CON 121.7 | UNICOM 122.95 |
|-----------------------|--|--|-------------------------|-------------------------|

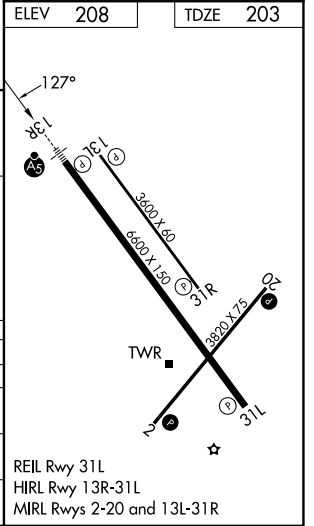


NW-1, 16 APR 2026 to 14 MAY 2026

NW-1, 16 APR 2026 to 14 MAY 2026

| | |
|----------|----------|
| ELEV 208 | TDZE 203 |
|----------|----------|

| | | | | | | |
|----------------------|----------------------|----------------------|------------------------------|------------------------------|------------------|-------------|
| 4 NM Holding Pattern | | DUCKA | COUVE | DOLLA | JIKIM | UBG |
| 6000 3900 | ←307° | 127°→ | 3300 | 2900 | 4.4 NM to RW13R | *INAV only. |
| GP 3.00° TCH 48 | | | | *1660 | *1.3 NM to RW13R | |
| CATEGORY | A | B | C | D | | |
| LPV DA# | | 403/24 | 200 (200-1/2) | | | |
| LNAV/VNAV DA | | 661/45 | 458 (500-7/8) | | | |
| LNAV MDA | 660/40 | 457 (500-3/4) | 660/50 | 457 (500-1) | | |
| CIRCLING | 680-1 472 (500-1) | 720-1 512 (600-1) | 720-1 1/2 512 (600-1 1/2) | 980-2 1/2 772 (800-2 1/2) | | |



REIL Rwy 31L
HIRL Rwy 13R-31L
MIRL Rwy 2-20 and 13L-31R