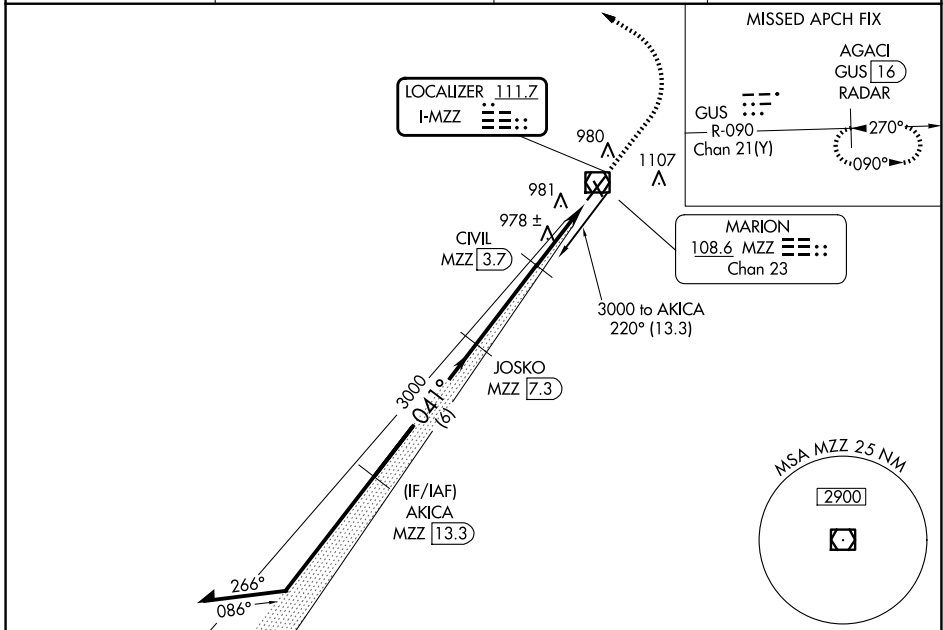


LOC I-MZZ 111.7	APP CRS 041°	Rwy Ldg TDZE Apt Elev	6011 858 859
---------------------------	------------------------	-----------------------------	---

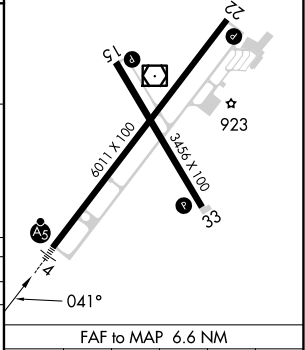
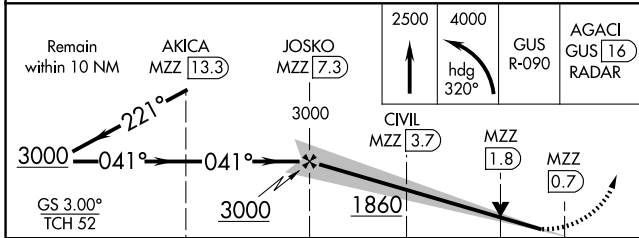
ILS or LOC RWY 4

MARION MUNI - MCKINNEY FLD (MZZ)

DME required.		MALSR	MISSED APPROACH: Climb to 2500 then climbing left turn to 4000 on heading 320° to intercept GUS VORTAC R-090 to AGACI/GUS VORTAC 16 DME/RADAR and hold.
▼ DME from MZZ VOR/DME. Simultaneous reception of I-MZZ and MZZ DME required. For inop ALS, increase S-LOC 4 Cats C and D visibility to 1½ SM. Circling Rwy 15 NA at night. ▲ NA			
AWOS-3 108.6	GRISSOM APP CON ★ 121.05 338.275	CLNC DEL 120.0	UNICOM 122.7 (CTAF) 0



ELEV 859	TDZE 858
HIRL Rwy 4-22	MIRL Rwy 15-33
REIL Rwy 15, 22, and 33	



CATEGORY	A	B	C	D
S-ILS 4	1058-½		200 (200-½)	
S-LOC 4	1260-½	402 (500-½)	1260-¾	402 (500-¾)
Ⓢ CIRCLING	1300-1 441 (500-1)	1320-1 461 (500-1)	1420-1½ 561 (600-1½)	1500-2 641 (700-2)

FAF to MAP 6.6 NM					
Knots	60	90	120	150	180
Min:Sec	6:34	4:22	3:17	2:37	2:11

EC-2, 16 APR 2026 to 14 MAY 2026

EC-2, 16 APR 2026 to 14 MAY 2026