

# LEMOORE-TWO DEPARTURE (NLC2.NLC)

LEMOORE NAS (REEVES FIELD) (KNLC)

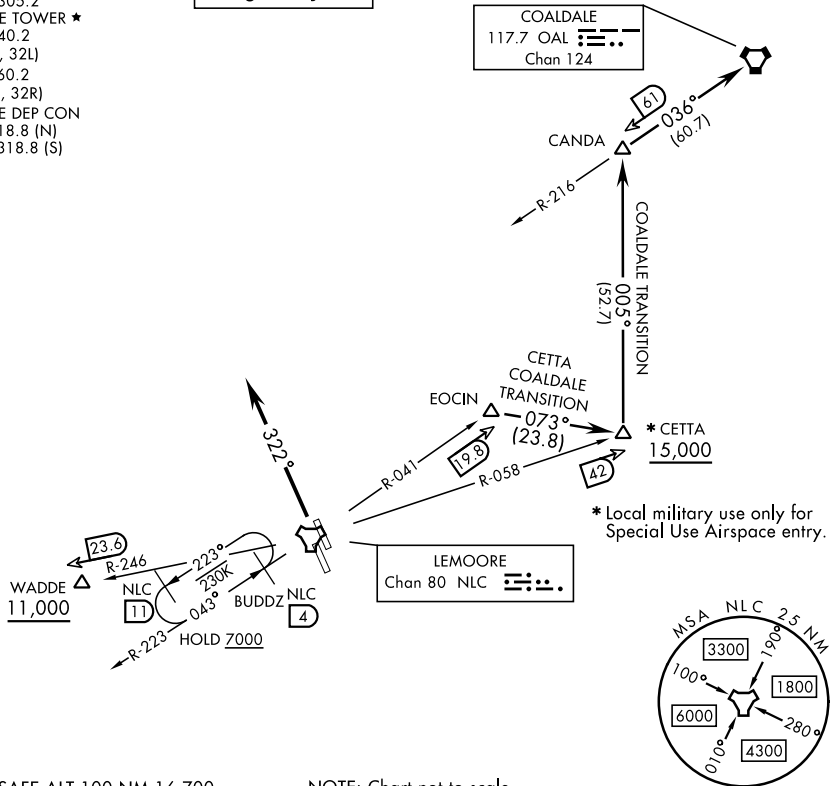
[USN]

LEMOORE, CALIFORNIA

RADAR required

ATIS ★ 121.575 327.15  
 CLNC DEL  
 124.1 371.9  
 GND CON  
 121.65 305.2  
 LEMOORE TOWER ★  
 128.3 340.2  
 (Rwy 14L, 32L)  
 128.3 360.2  
 (Rwy 14R, 32R)  
 LEMOORE DEP CON  
 124.1 318.8 (N)  
 118.15 318.8 (S)

**TOP ALTITUDE:  
Assigned by ATC**



EMERG SAFE ALT 100 NM 16,700

NOTE: Chart not to scale

## DEPARTURE ROUTE DESCRIPTION

**TAKEOFF RUNWAYS 32L/32R:** Climb to 2000 via hdg 322° then RADAR vectors to join assigned transition or route.

**CETTA TRANSITION (NLC2.CETTA):** From EOCIN direct CETTA then as filed. Cross CETTA at or above 15,000.

**COALDALE TRANSITION (NLC2.OAL):** From EOCIN direct CETTA, direct CANDA, direct COALDALE VORTAC. Cross CETTA at or above 15,000.

**WADDE TRANSITION (NLC2.WADDE):** From WADDE then as filed. Cross WADDE at or above 11,000.

**LOST COMMUNICATIONS:** If no transmissions are received within 8 DME of NLC TACAN, fly departure heading to intercept NLC 10 DME arc, arc to respective departure radial then via departure radial to assigned departure fix. Then via assigned route. Once established on departure radial climb to filed altitude.

# LEMOORE-TWO DEPARTURE (NLC2.NLC)

Orig 12JUN25

LEMOORE, CALIFORNIA

LEMOORE NAS (REEVES FIELD) (KNLC)

SW-2, 16 APR 2026 to 14 MAY 2026

SW-2, 16 APR 2026 to 14 MAY 2026